



# THE NEXT GENERATION OF CUT RESISTANT CLOTHING



**CUT RESISTANCE**  
ANSI/ISEA 2016



**ABRASION RESISTANCE**  
EN 388



**TEAR RESISTANCE**  
EN 388



**PUNCTURE RESISTANCE**  
EN 388



**CUT RESISTANCE (TDM-100 Test)**  
EN 388

# Contents

2. CutPRO® Cut Resistant Clothing

3. About Cut-Tex® PRO

## UPPER BODY

4. CutPRO® 100210 Pull Over Top with Half Zip Turtle Neck

5. CutPRO® 100218 Sweatshirt with Crew Neck

6. CutPRO® 800531 Sweatshirts with Hi-Vis Tape, Thumbholes and Breathable Underarms

7. CutPRO® 100209 Sweatshirt with Turtle Neck

8. CutPRO® 100200 Zipped Jacket with Hi-Vis Tape

9. CutPRO® 100201 Top with Crew Neck and Belly Patch

10. CutPRO® 100202 Top with Crew Neck and Belly Patch

11. CutPRO® 100212 Crew Neck Armguard Shirt

12. CutPRO® 100207 Lab Coat

14. CutPRO® 100217 Crew Neck Armguard Shirt with Belly Patch

13. CutPRO® 800530 Turtleneck Zip Jacket with Hi-Vis Tape, Thumbholes and Breathable Underarms

## LOWER BODY

15. CutPRO® 100206 Trousers with Front Protection

16. CutPRO® 100216 Trousers with Front and Back Protection

## APRONS and SLEEVES

17. CutPRO® 100205 Pull on Sleeve

18. CutPRO® 100213 Full Length Apron

19. CutPRO® 100214 Half Apron

20. CutPRO® 100215 Split Apron

## MORE INFORMATION

21. Size Guide

22. Important information

23. Contact

# CutPRO® Cut Resistant Clothing

CutPRO® is a truly innovative brand of high performance cut resistant workwear, designed to offer reliable, ultra-durable and thoroughly field-tested cut protection to professionals in the glass and metal industry.

Our products take cut resistant clothing to a whole new level. Made from our very own specialist fabric Cut-Tex® PRO all garments offer outstanding levels of cut, tear, abrasion and puncture resistance, while being durable, lightweight and comfortable.

Used across the CutPRO® range, our highly acclaimed fabric provides the best possible defence against cuts and lacerations and offers workers personal protection they actually will want to wear.

All of our protective garments are fully CE marked and offer ANSI/ISEA 2016 Level A5 and according to the latest EN 388:2016 standard Blade Cut Resistance Level E, as well as the highest levels of puncture and tear resistance, according to EN 388:2016.

According to the previous EN 388:2003 Standard CutPRO® Cut Resistant Clothing offers Cut Level 5.

The handling of flat glass, sheet metal or other sometimes sharp raw or engineered materials involves the risk of serious personal injury. Serious accidents continue to happen especially in premises where these materials are being handled and processed manually. In such cases and environments, appropriate protective clothing should be worn at all times.

I strongly believe we can deem CutPRO® Cut Resistant Clothing as appropriate. It can effectively help reduce the risk of cut injuries, and it can be customised to reflect the customer's unique operational risks, responsibilities, branding and design preferences.

CutPRO® Cut Resistant Clothing is the result of extensive research and contribution from health and safety professionals of leading flat glass and sheet metal processing companies.

Robert Kaiser, CEO  
PPSS Group

## Why Choose CutPRO®?

- High quality cut resistant clothing is essential in glass and metal handling. Cuts and lacerations can cause rapid blood loss, infection, permanent damage to soft tissues, and even death.
- Not only do manual handling incidents cost firms time and money, they highlight a serious failure in employers' duty of care, which can lead to reputation loss, and even criminal prosecution.
- Cheaper alternatives are likely to offer inferior protection, costing you more in replacements and compromising safety.
- Not all cut resistant products offer high levels of tear, puncture or abrasion resistance: significant additional factors for safety.
- It is lightweight, comfortable and fully washable, making it a practical solution to personal protection.



Visit our website: [www.cut-pro.com](http://www.cut-pro.com)

T: +44 (0) 845 5193 953 | E: [info@cut-pro.com](mailto:info@cut-pro.com)

# About Cut-Tex<sup>®</sup> PRO

## Cut-Tex<sup>®</sup> PRO

The Ultimate Cut Protection<sup>™</sup>

Cut-Tex<sup>®</sup> PRO is an ultra-high performance cut and slash resistant fabric, comfortable to wear, fully machine washable and of truly exceptional strength and durability - making it the ideal material for CutPRO<sup>®</sup> Cut Resistant Clothing.

*As you can see below, Cut-Tex<sup>®</sup> PRO performs very highly in all cut, abrasion, tear and puncture tests:*

### Cut-Tex<sup>®</sup> PRO Performance Chart:

> **Cut Resistance** - ANSI/ISEA 2016 Blade Resistance Levels A1-A9



> **Abrasion Resistance** - EN 388:2016 Abrasion Resistance Levels 1-4



> **Tear Resistance** - EN 388:2016 Tear Resistance Levels 1-4



> **Puncture Resistance** - EN 388:2016 Puncture Resistance Levels 1-4



> **Cut Resistance** - EN ISO 13997 (TDM-100 Test)





**Product:** CutPRO® Pull Over Top with Half Zip Turtle Neck

**Model #:** 100210



CutPRO® Cut Resistant Tops are manufactured using Cut-Tex® PRO, offering outstanding tested and certified levels of cut, abrasion, tear and puncture resistance.



**Features and Benefits**

- Cut-Tex® PRO is used to provide excellent cut resistance
- Full front, neck and arm protection
- Breathable polyester back
- Thumb holes
- 8" length zip
- Shoulder and elbow patches
- 100% latex free

**Bespoke features available – please contact us for further details**

\*Minimum order quantities apply Logo embroidery

- Logo embroidery

**Suitable for professionals working in the following industries:**

- Glass and glazing
- Metal
- Ceramics
- Industrial manufacturing
- Recycling

**Material Content**

Cut-Tex® PRO, Polyester, Cotton

**Cut Resistance**

EN ISO 13997 (TDM-100 Test) Level E

ANSI/ISEA 2016 Level A5

**Abrasion Resistance**

EN 388:2016 Level 3

**Tear Resistance**

EN 388:2016 Level 4

**Puncture Resistance**

EN 388:2016 Level 4

Sizes

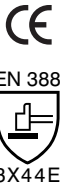
S - 5XL

Colour

Cut-Tex® PRO - Grey Marl  
Piping - Orange  
Polycotton - Grey

Place of Manufacture

EU - CE PPE Regulation (EU) 2016/425



■ Protective areas using 100% Cut-Tex® PRO

□ Non-protected areas



CutPRO® branded products are unavailable in Canada, please contact us for other available branding options.  
Notified Body BTTG Testing & Certification (0388)



Visit our website: [www.cut-pro.com](http://www.cut-pro.com)

T: +44 (0) 845 5193 953 | E: [info@cut-pro.com](mailto:info@cut-pro.com)



**Product:** CutPRO® Sweatshirt with Crew Neck

**Model #:** 100218



CutPRO® Cut Resistant Tops are manufactured using Cut-Tex® PRO, offering outstanding tested and certified levels of cut, abrasion, tear and puncture resistance.



**Features and Benefits**

- Cut-Tex® PRO is used to provide excellent cut resistance
- Full front, arms and shoulder protection
- Breathable polyester back and underarms
- Thumb holes
- Crew neck
- 100% latex free

**Bespoke features available – please contact us for further details**

\*Minimum order quantities apply Logo embroidery

- Logo embroidery
- Alternative colour options for non- Cut-Tex® PRO fabrics are available

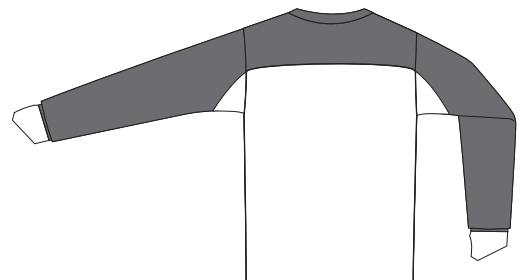
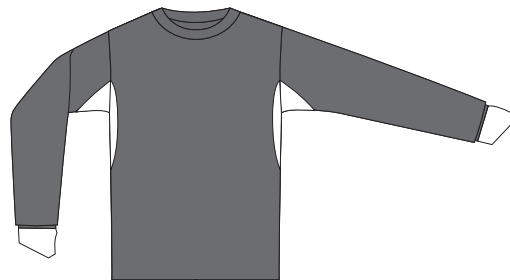


**Suitable for professionals working in the following industries:**

- Glass and glazing
- Metal
- Ceramics
- Industrial manufacturing
- Recycling

■ **Protective areas using 100% Cut-Tex® PRO**

□ **Non-protected areas**



**Material Content**

Cut-Tex® PRO, Polyester

**Cut Resistance**

EN ISO 13997 (TDM-100 Test) Level E

ANSI/ISEA 2016 Level A5

**Abrasion Resistance**

EN 388:2016 Level 3

**Tear Resistance**

EN 388:2016 Level 4

**Puncture Resistance**

EN 388:2016 Level 4

Sizes S - 5XL

**Colour**

Cut-Tex® PRO - Grey Marl  
Polyester - Black and Orange



**Place of Manufacture**

EU - CE PPE Regulation (EU) 2016/425



Visit our website: [www.cut-pro.com](http://www.cut-pro.com)

T: +44 (0) 845 5193 953 | E: [info@cut-pro.com](mailto:info@cut-pro.com)





**Product:** CutPRO® Sweatshirt with Hi-Vis Tape, Thumbholes and Breathable Underarms

**Model #:** 800531

CutPRO® Cut Resistant Sweatshirts are manufactured using Cut-Tex® PRO, offering outstanding tested and certified levels of cut, abrasion, tear and puncture resistance.



**Features and Benefits**

- Cut-Tex® PRO is used to provide excellent cut resistance
- Full front, arms, neck and back protection
- Breathable underarms
- Thumb holes
- Hi-Vis tape
- 100% latex free

**Bespoke features available – please contact us for further details**

\*Minimum order quantities apply Logo embroidery

- Logo embroidery

**Suitable for professionals working in the following industries:**

- Glass and glazing
- Metal
- Ceramics
- Industrial manufacturing
- Recycling

**Material Content**

Cut-Tex® PRO, Polyester

**Cut Resistance**

EN ISO 13997 (TDM-100 Test) Level E

ANSI/ISEA 2016 Level A5

**Abrasion Resistance**

EN 388:2016 Level 3

**Tear Resistance**

EN 388:2016 Level 4

**Puncture Resistance**

EN 388:2016 Level 4

Sizes

S - 5XL

Colour

Cut-Tex® PRO - Grey Marl  
Polyester - Black



Place of Manufacture

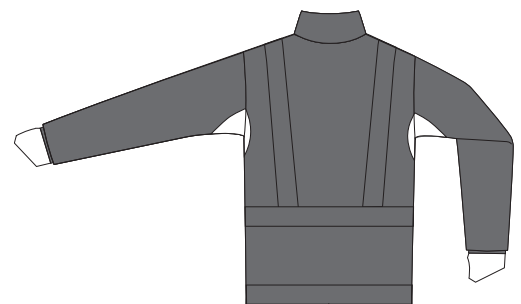
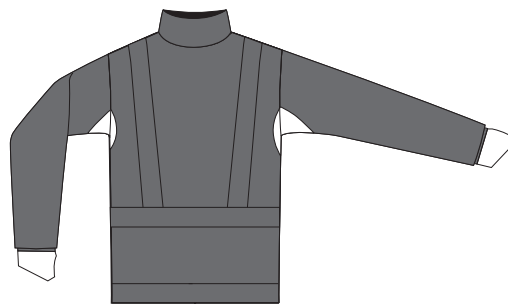
EU - CE PPE Regulation (EU) 2016/425



**Protective areas using 100% Cut-Tex® PRO**



**Non-protected areas**



CutPRO® branded products are unavailable in Canada, please contact us for other available branding options.  
Notified Body BTTG Testing & Certification (0388)



Visit our website: [www.cut-pro.com](http://www.cut-pro.com)

T: +44 (0) 845 5193 953 | E: [info@cut-pro.com](mailto:info@cut-pro.com)



**Product:** CutPRO® Sweatshirt with Turtle Neck

**Model #:** 100209



CutPRO® Cut Resistant Tops are manufactured using Cut-Tex® PRO, offering outstanding tested and certified levels of cut, abrasion, tear and puncture resistance.



**Features and Benefits**

- Cut-Tex® PRO is used to provide excellent cut resistance
- Full front, arms, neck and shoulder protection
- Breathable polyester back and underarms
- Thumb holes
- 100% latex free

**Bespoke features available – please contact us for further details**

\*Minimum order quantities apply Logo embroidery

- Logo embroidery
- Alternative colour options for non-Cut-Tex® PRO fabrics are available

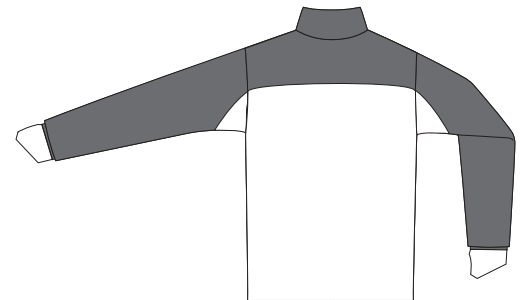
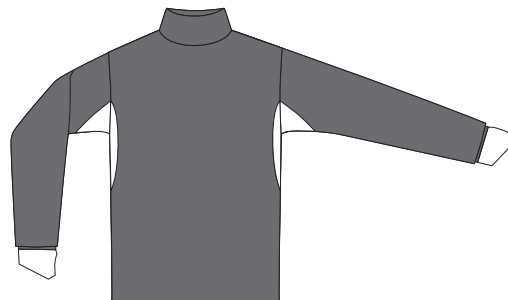


**Suitable for professionals working in the following industries:**

- Glass and glazing
- Metal
- Ceramics
- Industrial manufacturing
- Recycling

■ **Protective areas using 100% Cut-Tex® PRO**

□ **Non-protected areas**



CutPRO® branded products are unavailable in Canada, please contact us for other available branding options.  
Notified Body BTTG Testing & Certification (0388)

**Material Content**

Cut-Tex® PRO, Polyester

**Cut Resistance**

EN ISO 13997 (TDM-100 Test) Level E

ANSI/ISEA 2016 Level A5

**Abrasion Resistance**

EN 388:2016 Level 3

**Tear Resistance**

EN 388:2016 Level 4

**Puncture Resistance**

EN 388:2016 Level 4

Sizes S - 5XL

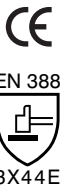
**Colour**

Cut-Tex® PRO - Grey Marl  
Polyester - Black and Grey



**Place of Manufacture**

EU - CE PPE Regulation (EU) 2016/425



Visit our website: [www.cut-pro.com](http://www.cut-pro.com)

T: +44 (0) 845 5193 953 | E: [info@cut-pro.com](mailto:info@cut-pro.com)





**Product:** CutPRO® Zipped Jacket with Hi-Vis Tape

**Model #:** 100200



CutPRO® Cut Resistant Jackets are manufactured using Cut-Tex® PRO, offering outstanding tested and certified levels of cut, abrasion, tear and puncture resistance.



**Features and Benefits**

- Cut-Tex® PRO is used to provide excellent cut resistance
- Full front, arms, neck and shoulder protection
- Breathable polyester back
- Thumb holes
- Hi-Vis tape
- Full front zip
- 100% latex free

**Bespoke features available – please contact us for further details**

\*Minimum order quantities apply Logo embroidery

- Logo embroidery
- Alternative colour options for non-Cut-Tex® PRO fabrics are available

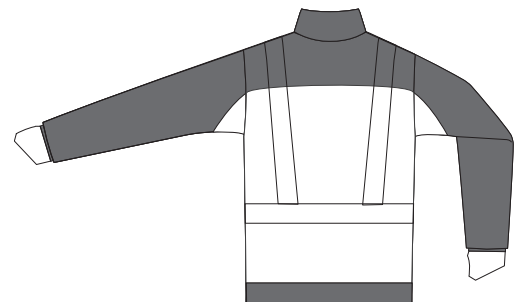


**Suitable for professionals working in the following industries:**

- Glass and glazing
- Metal
- Ceramics
- Industrial manufacturing
- Recycling

■ Protective areas using 100% Cut-Tex® PRO

□ Non-protected areas



**Material Content**

Cut-Tex® PRO, Polyester

**Cut Resistance**

EN ISO 13997 (TDM-100 Test) Level E

ANSI/ISEA 2016 Level A5

**Abrasion Resistance**

EN 388:2016 Level 3

**Tear Resistance**

EN 388:2016 Level 4

**Puncture Resistance**

EN 388:2016 Level 4

Sizes S - 5XL

Colour Cut-Tex® PRO - Grey Marl  
Polyester - Black



Place of Manufacture EU - CE PPE Regulation (EU) 2016/425



Visit our website: [www.cut-pro.com](http://www.cut-pro.com)

T: +44 (0) 845 5193 953 | E: [info@cut-pro.com](mailto:info@cut-pro.com)



**Product:** CutPRO® Top with Crew Neck and Belly Patch

**Model #:** 100201

CutPRO® Cut Resistant Tops are manufactured using Cut-Tex® PRO, offering outstanding tested and certified levels of cut, abrasion, tear and puncture resistance.



**Features and Benefits**

- Cut-Tex® PRO is used to provide excellent cut resistance
- Abdominal and forearm protection
- Breathable polyester chest, shoulders and back
- Thumb loops
- Crew neck
- 100% latex free

**Bespoke features available – please contact us for further details**

\*Minimum order quantities apply Logo embroidery

- Logo embroidery
- Alternative colour options for non-Cut-Tex® PRO fabrics are available

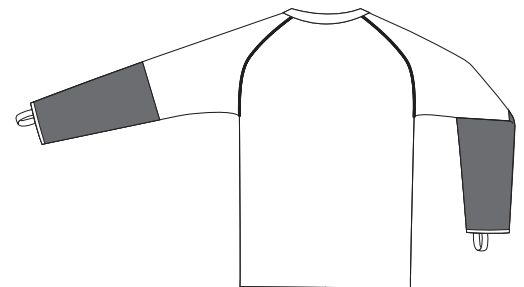
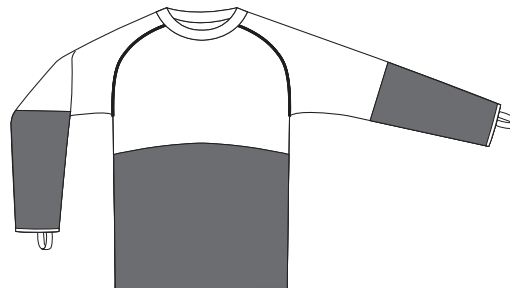


**Suitable for professionals working in the following industries:**

- Glass and glazing
- Metal
- Ceramics
- Industrial manufacturing
- Recycling

■ **Protective areas using 100% Cut-Tex® PRO**

□ **Non-protected areas**



**Material Content**

Cut-Tex® PRO, Polyester

**Cut Resistance**

EN ISO 13997 (TDM-100 Test) Level E

ANSI/ISEA 2016 Level A5

**Abrasion Resistance**

EN 388:2016 Level 3

**Tear Resistance**

EN 388:2016 Level 4

**Puncture Resistance**

EN 388:2016 Level 4

Sizes S - 5XL

**Colour**

Cut-Tex® PRO - Grey Marl  
Polyester - Black and Orange



**Place of Manufacture**

EU - CE PPE Regulation (EU) 2016/425



Visit our website: [www.cut-pro.com](http://www.cut-pro.com)

T: +44 (0) 845 5193 953 | E: [info@cut-pro.com](mailto:info@cut-pro.com)

**Product:** CutPRO® Top with Crew Neck and Belly Patch

**Model #:** 100202

CutPRO® Cut Resistant Tops are manufactured using Cut-Tex® PRO, offering outstanding tested and certified levels of cut, abrasion, tear and puncture resistance.



**Features and Benefits**

- Cut-Tex® PRO is used to provide excellent cut resistance
- Forearm protection
- Breathable polyester front, shoulders and back
- Thumb loops
- Crew neck
- 100% latex free

**Bespoke features available – please contact us for further details**

\*Minimum order quantities apply Logo embroidery

- Logo embroidery
- Alternative colour options for non-Cut-Tex® PRO fabrics are available

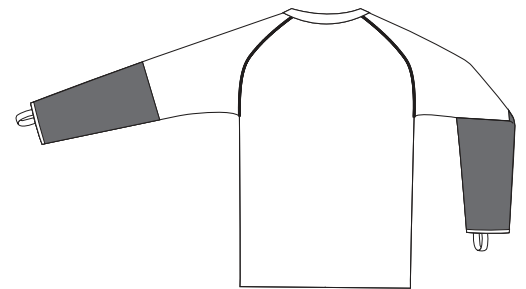
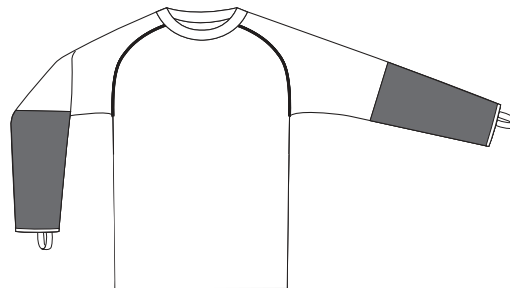


**Suitable for professionals working in the following industries:**

- Glass and glazing
- Metal
- Ceramics
- Industrial manufacturing
- Recycling

■ **Protective areas using 100% Cut-Tex® PRO**

□ **Non-protected areas**



**Material Content**

Cut-Tex® PRO, Polyester

**Cut Resistance**

EN ISO 13997 (TDM-100 Test) Level E

ANSI/ISEA 2016 Level A5

**Abrasion Resistance**

EN 388:2016 Level 3

**Tear Resistance**

EN 388:2016 Level 4

**Puncture Resistance**

EN 388:2016 Level 4

Sizes S - 5XL

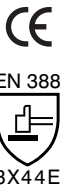
**Colour**

Cut-Tex® PRO - Grey Marl  
Polyester - Black and Orange



**Place of Manufacture**

EU - CE PPE Regulation (EU) 2016/425



CutPRO® branded products are unavailable in Canada, please contact us for other available branding options.  
Notified Body BTTG Testing & Certification (0388)



**Product:** CutPRO® Crew Neck Armguard Shirt

**Model #:** 100212

CutPRO® Cut Resistant Tops are manufactured using Cut-Tex® PRO, offering outstanding tested and certified levels of cut, abrasion, tear and puncture resistance.



**Features and Benefits**

- Cut-Tex® PRO is used to provide excellent cut resistance
- Full arm and shoulder protection
- Breathable polyester front and back
- Thumb loops
- 100% latex free

**Bespoke features available – please contact us for further details**

\*Minimum order quantities apply Logo embroidery

- Logo embroidery
- Alternative colour options for non-Cut-Tex® PRO fabrics are available

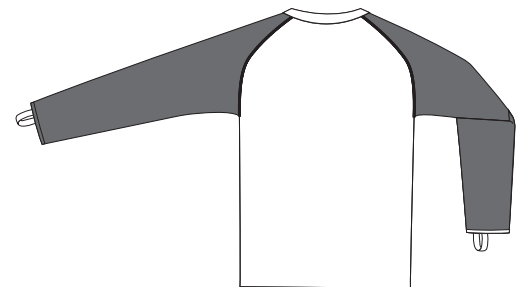
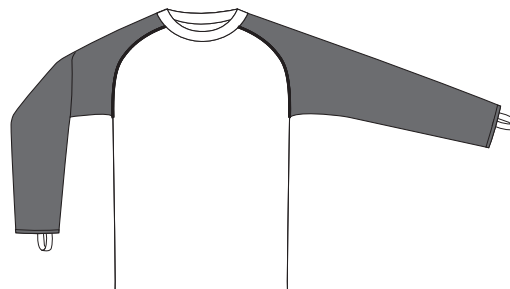


**Suitable for professionals working in the following industries:**

- Glass and glazing
- Metal
- Ceramics
- Industrial manufacturing
- Recycling

■ **Protective areas using 100% Cut-Tex® PRO**

□ **Non-protected areas**



**Material Content**

Cut-Tex® PRO, Polyester

**Cut Resistance**

EN ISO 13997 (TDM-100 Test) Level E

ANSI/ISEA 2016 Level A5

**Abrasion Resistance**

EN 388:2016 Level 3

**Tear Resistance**

EN 388:2016 Level 4

**Puncture Resistance**

EN 388:2016 Level 4

Sizes S - 5XL

**Colour**

Cut-Tex® PRO - Grey Marl  
Polyester - Black and Orange



**Place of Manufacture**

EU - CE PPE Regulation (EU) 2016/425



CutPRO® branded products are unavailable in Canada, please contact us for other available branding options.  
Notified Body BTTG Testing & Certification (0388)



Visit our website: [www.cut-pro.com](http://www.cut-pro.com)

T: +44 (0) 845 5193 953 | E: [info@cut-pro.com](mailto:info@cut-pro.com)



**Product:** CutPRO® Lab Coat

**Model #:** 100207

CutPRO® Cut Resistant Coats are manufactured using Cut-Tex® PRO – offering absolutely outstanding, tested and certified levels of cut, abrasion, tear and puncture resistance.



**Features and Benefits**

- Cut-Tex® PRO is used to provide excellent cut resistance
- Full front, neck, shoulder and arm protection
- Cool mesh back
- Inside breast pocket
- Full front zip with added Velcro
- 100% latex free

**Suitable for professionals working in the following industries:**

- Glass and glazing
- Metal
- Ceramics
- Industrial manufacturing
- Recycling

**Material Content**

Cut-Tex® PRO, Nylon

**Cut Resistance**

EN ISO 13997 (TDM-100 Test) Level E

ANSI/ISEA 2016 Level A5

**Abrasion Resistance**

EN 388:2016 Level 3

**Tear Resistance**

EN 388:2016 Level 4

**Puncture Resistance**

EN 388:2016 Level 4

Sizes

S - 5XL

Colour

Cut-Tex® PRO - Grey Marl

Place of Manufacture

EU - CE PPE Regulation (EU) 2016/425



■ Protective areas using 100% Cut-Tex® PRO

□ Non-protected areas



CutPRO® branded products are unavailable in Canada, please contact us for other available branding options.  
Notified Body BTTG Testing & Certification (0388)



Visit our website: [www.cut-pro.com](http://www.cut-pro.com)

T: +44 (0) 845 5193 953 | E: [info@cut-pro.com](mailto:info@cut-pro.com)



**Product:** CutPRO® Crew Neck Armguard Shirt with Belly Patch

**Model #:** 100217

CutPRO® Cut Resistant Tops are manufactured using Cut-Tex® PRO, offering outstanding tested and certified levels of cut, abrasion, tear and puncture resistance.



**Features and Benefits**

- Cut-Tex® PRO is used to provide excellent cut resistance
- Full arm, shoulder and abdomen protection
- Breathable polyester chest and back
- Thumb loops
- 100% latex free

**Bespoke features available – please contact us for further details**

\*Minimum order quantities apply Logo embroidery

- Logo embroidery
- Alternative colour options for non-Cut-Tex® PRO fabrics are available

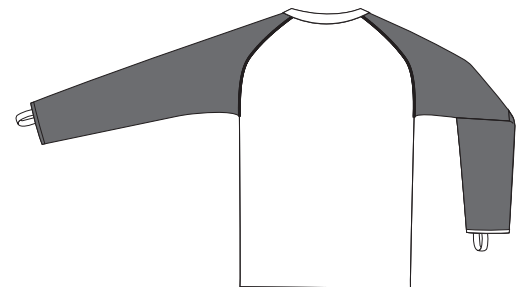
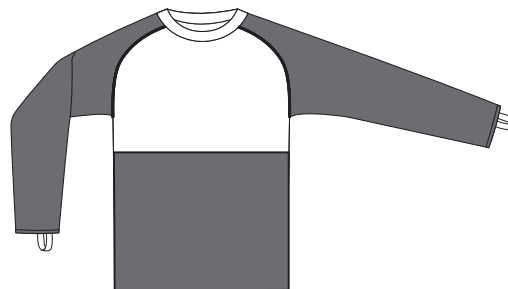


**Suitable for professionals working in the following industries:**

- Glass and glazing
- Metal
- Ceramics
- Industrial manufacturing
- Recycling

■ **Protective areas using 100% Cut-Tex® PRO**

□ **Non-protected areas**



**Material Content**

Cut-Tex® PRO, Polyester

**Cut Resistance**

EN ISO 13997 (TDM-100 Test) Level E

ANSI/ISEA 2016 Level A5

**Abrasion Resistance**

EN 388:2016 Level 3

**Tear Resistance**

EN 388:2016 Level 4

**Puncture Resistance**

EN 388:2016 Level 4

Sizes S - 5XL

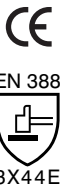
**Colour**

Cut-Tex® PRO - Grey Marl  
Polyester - Black and Orange



**Place of Manufacture**

EU - CE PPE Regulation (EU) 2016/425



CutPRO® branded products are unavailable in Canada, please contact us for other available branding options.  
Notified Body BTTG Testing & Certification (0388)



Visit our website: [www.cut-pro.com](http://www.cut-pro.com)

T: +44 (0) 845 5193 953 | E: [info@cut-pro.com](mailto:info@cut-pro.com)



**Product:** CutPRO® Turtleneck Zip Jacket with Hi-Vis Tape, Thumbholes and Breathable Underarms

**Model #:** 800530

CutPRO® Cut Resistant Jackets are manufactured using Cut-Tex® PRO, offering outstanding tested and certified levels of cut, abrasion, tear and puncture resistance.



**Features and Benefits**

- Cut-Tex® PRO is used to provide excellent cut resistance
- Full front, arms, neck and back protection
- Breathable underarms
- Thumb holes
- Hi-Vis tape
- Full front zip
- 100% latex free

**Bespoke features available – please contact us for further details**

\*Minimum order quantities apply Logo embroidery

- Logo embroidery

**Suitable for professionals working in the following industries:**

- Glass and glazing
- Metal
- Ceramics
- Industrial manufacturing
- Recycling

**Material Content**

Cut-Tex® PRO, Polyester

**Cut Resistance**

EN ISO 13997 (TDM-100 Test) Level E

ANSI/ISEA 2016 Level A5

**Abrasion Resistance**

EN 388:2016 Level 3

**Tear Resistance**

EN 388:2016 Level 4

**Puncture Resistance**

EN 388:2016 Level 4

Sizes S - 5XL

**Colour**

Cut-Tex® PRO - Grey Marl  
Polyester - Black



**Place of Manufacture**

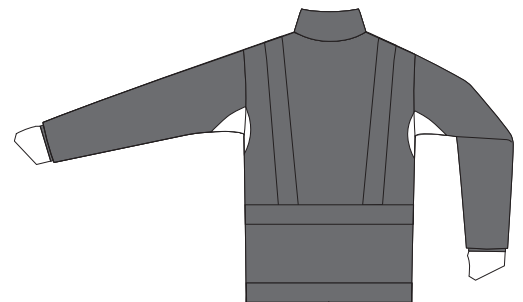
EU - CE PPE Regulation (EU) 2016/425



**Protective areas using 100% Cut-Tex® PRO**



**Non-protected areas**



CutPRO® branded products are unavailable in Canada, please contact us for other available branding options.  
Notified Body BTTG Testing & Certification (0388)



Visit our website: [www.cut-pro.com](http://www.cut-pro.com)

T: +44 (0) 845 5193 953 | E: [info@cut-pro.com](mailto:info@cut-pro.com)



**Product: CutPRO® Trousers with Front Protection**

**Model #: 100206**

CutPRO® Cut Resistant Trousers are manufactured using Cut-Tex® PRO – offering absolutely outstanding, tested and certified levels of cut, abrasion, tear and puncture resistance.



**Features and Benefits**

- Cut-Tex® PRO is used to provide excellent cut resistance
- Full front leg protection
- Knee patches
- Hi-Vis piping
- Belt loops
- Front and rear pockets
- Side leg pocket
- D-ring attachment
- 100% latex free

**Bespoke features available – please contact us for further details**

\*Minimum order quantities apply Logo embroidery

- Garment available with front and back protection (100216)
- Alternative colour options for non - Cut-Tex® PRO fabrics are available

**Suitable for professionals working in the following industries:**

- Glass and glazing
- Metal
- Ceramics

 **Protective areas using 100% Cut-Tex® PRO**

 **Non-protected areas**

**Material Content**

Cut-Tex® PRO, Nylon, Polyester, Cotton, Velcro

**Cut Resistance**

EN ISO 13997 (TDM-100 Test) Level E

ANSI/ISEA 2016 Level A5

**Abrasion Resistance**

EN 388:2016 Level 3

**Tear Resistance**

EN 388:2016 Level 4

**Puncture Resistance**

EN 388:2016 Level 4

**Sizes**

Waist: 30"/32"/34"/36"/38"/40"/42"/44"/46"/48"  
Adjustable leg lengths between 30 – 34 inches

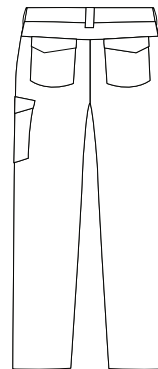
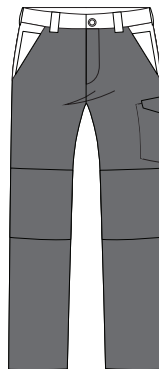
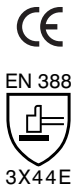
**Colour**

Cut-Tex® PRO - Grey Marl  
Piping - Orange  
Polycotton - Grey



**Place of Manufacture**

EU - CE PPE Regulation (EU) 2016/425



CutPRO® branded products are unavailable in Canada, please contact us for other available branding options.  
Noti ed Body BTTG Testing & Certification (0388)



**Visit our website: [www.cut-pro.com](http://www.cut-pro.com)**

**T: +44 (0) 845 5193 953 | E: [info@cut-pro.com](mailto:info@cut-pro.com)**





**Product: CutPRO® Trousers with Front and Back Protection**

**Model #: 100216**



CutPRO® Cut Resistant Trousers are manufactured using Cut-Tex® PRO – offering absolutely outstanding, tested and certified levels of cut, abrasion, tear and puncture resistance.

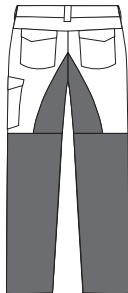
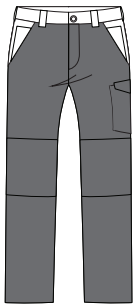


**Features and Benefits**

- Cut-Tex® PRO is used to provide excellent cut resistance
- Full front, lower back leg and groin protection
- Knee patches
- Hi-Vis piping
- Belt loops
- Rear pockets
- Side leg pocket
- D-ring attachment
- 100% latex free

**Suitable for professionals working in the following industries:**

- Glass and glazing
- Metal
- Ceramics
- Industrial manufacturing
- Recycling



**Protective areas using 100% Cut-Tex® PRO**



**Non-protected areas**

**Material Content**

Cut-Tex® PRO, Nylon, Polyester, Cotton, Velcro

**Cut Resistance**

EN ISO 13997 (TDM-100 Test) Level E

ANSI/ISEA 2016 Level A5

**Abrasion Resistance**

EN 388:2016 Level 3

**Tear Resistance**

EN 388:2016 Level 4

**Puncture Resistance**

EN 388:2016 Level 4

**Sizes**

Waist: 30"/32"/34"/36"/38"/0"/42"/44"/46"/48"  
Adjustable leg lengths between 30 – 34 inches

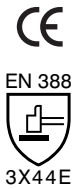
**Colour**

Cut-Tex® PRO - Grey Marl  
Piping - Orange  
Polycotton - Grey



**Place of Manufacture**

EU - CE PPE Regulation (EU) 2016/425



**Important Information**

- Do not use this product for protection from high speed or serrated blade
- Do not use this product near moving machines or where there is a risk of entanglement
- This product is designed to minimise the risk of injury from potential hazards in the industrial workspace (abrasions, cuts, tears and puncture)
- This product is used only for the designated purpose, no item of PPE can provide full protection
- This product is not designed to protect the hands, gloves are to be worn when required
- This product does not protect from hypodermic needles or similar sharp pointed objects
- Care and attention must always be taken when in a carrying out potential hazardous activities in the workspace
- Cut-Tex® PRO is an ultra-high performance cut resistant fabric, however, it is not cut proof

**Maintenance**

- Do not wear this product if damaged, always inspect prior to use
- Do not leave in a contaminated condition, launder immediately
- When not worn, store this product in cool dry conditions away from direct sunlight



- Wash dark colours separately
- Do not wash with fabric conditioner
- Reshape whilst damp

Declaration of Product Conformity can be found at [www.cut-pro.com/ec-docs/](http://www.cut-pro.com/ec-docs/)

CutPRO® Cut Resistant Clothing, PPSS Limited, Unit 603, Avenue D, Thorp Arch Estate, Wetherby, West Yorkshire LS23 7FS, United Kingdom | Notified Body BTTG Testing & Certification (0388)



Visit our website: [www.cut-pro.com](http://www.cut-pro.com)

T: +44 (0) 845 5193 953 | E: [info@cut-pro.com](mailto:info@cut-pro.com)



**Product:** CutPRO® Pull on Sleeve

**Model #:** 100205



CutPRO® Cut Resistant Pull on Sleeves are manufactured using Cut-Tex® PRO – offering absolutely outstanding, tested and certified levels of cut, abrasion, tear and puncture resistance.

**Features and Benefits**

- Cut-Tex® PRO is used to provide excellent cut resistance
- Forearm protection
- Thumb holes
- 100% latex free

**Suitable for professionals working in the following industries:**

- Glass and glazing
- Metal
- Ceramics
- Industrial manufacturing
- Recycling

**Material Content**

Cut-Tex® PRO, Polyester

**Cut Resistance**

EN ISO 13997 (TDM-100 Test) Level E

ANSI/ISEA 2016 Level A5

**Abrasion Resistance**

EN 388:2016 Level 3

**Tear Resistance**

EN 388:2016 Level 4

**Puncture Resistance**

EN 388:2016 Level 4

Sizes S - XL

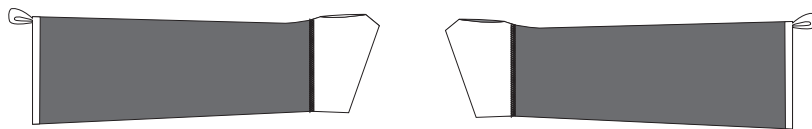
Colour Cut-Tex® PRO - Grey Marl

Place of Manufacture EU - CE PPE Regulation (EU) 2016/425



■ Protective areas using 100% Cut-Tex® PRO

□ Non-protected areas



This CutPRO® branded product is unavailable in the US, please contact us for other available branding.  
 CutPRO® branded products are unavailable in Canada, please contact us for other available branding options.  
 Notified Body BTTG Testing & Certification (0388)



Visit our website: [www.cut-pro.com](http://www.cut-pro.com)

T: +44 (0) 845 5193 953 | E: [info@cut-pro.com](mailto:info@cut-pro.com)



**Product:** CutPRO® Full Length Apron

**Model #:** 100213



CutPRO® Cut Resistant Aprons are manufactured using Cut-Tex® PRO – offering absolutely outstanding, tested and certified levels of cut, abrasion, tear and puncture resistance.

**Features and Benefits**

- Cut-Tex® PRO is used to provide excellent cut resistance
- Full cut protection
- Clip-on adjustable straps
- 100% latex free

**Suitable for professionals working in the following industries:**

- Glass and glazing
- Metal
- Ceramics
- Industrial manufacturing
- Recycling

**Material Content**

Cut-Tex® PRO, Nylon, Polyester, Cotton

**Cut Resistance**

EN ISO 13997 (TDM-100 Test) Level E

ANSI/ISEA 2016 Level A5

**Abrasion Resistance**

EN 388:2016 Level 3

**Tear Resistance**

EN 388:2016 Level 4

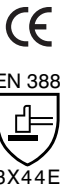
**Puncture Resistance**


EN 388:2016 Level 4

Sizes One size

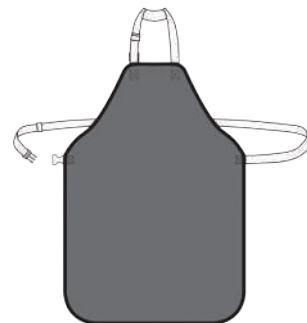
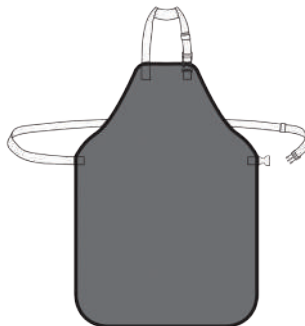
Colour Cut-Tex® PRO - Grey Marl

Place of Manufacture EU - CE PPE Regulation (EU) 2016/425



 **Protective areas using 100% Cut-Tex® PRO**

 **Non-protected areas**



This CutPRO® branded product is unavailable in the US, please contact us for other available branding.  
 CutPRO® branded products are unavailable in Canada, please contact us for other available branding options.  
 Notified Body BTTG Testing & Certification (0388)



Visit our website: [www.cut-pro.com](http://www.cut-pro.com)

T: +44 (0) 845 5193 953 | E: [info@cut-pro.com](mailto:info@cut-pro.com)



**Product:** CutPRO® Half Apron

**Model #:** 100214

CutPRO® Cut Resistant Aprons are manufactured using Cut-Tex® PRO – offering absolutely outstanding, tested and certified levels of cut, abrasion, tear and puncture resistance.



**Features and Benefits**

- Cut-Tex® PRO is used to provide excellent cut resistance
- Full cut protection
- Various sized pockets
- Clip-on adjustable strap
- 100% latex free

**Suitable for professionals working in the following industries:**

- Glass and glazing
- Metal
- Ceramics
- Industrial manufacturing
- Recycling

**Material Content**

Cut-Tex® PRO, Nylon, Polyester, Cotton

**Cut Resistance**

EN ISO 13997 (TDM-100 Test) Level E

ANSI/ISEA 2016 Level A5

**Abrasion Resistance**

EN 388:2016 Level 3

**Tear Resistance**

EN 388:2016 Level 4

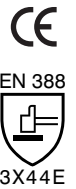
**Puncture Resistance**

EN 388:2016 Level 4

Sizes One size

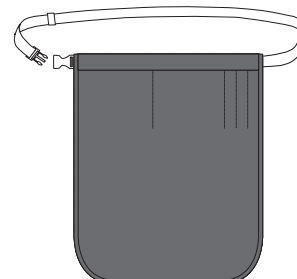
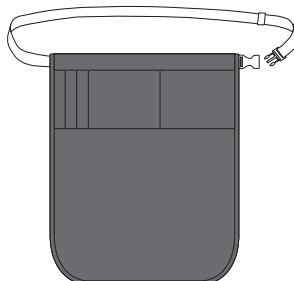
Colour Cut-Tex® PRO - Grey Marl

Place of Manufacture EU - CE PPE Regulation (EU) 2016/425



■ **Protective areas using 100% Cut-Tex® PRO**

□ **Non-protected areas**



This CutPRO® branded product is unavailable in the US, please contact us for other available branding.  
 CutPRO® branded products are unavailable in Canada, please contact us for other available branding options.  
 Notified Body BTTG Testing & Certification (0388)



Visit our website: [www.cut-pro.com](http://www.cut-pro.com)

T: +44 (0) 845 5193 953 | E: [info@cut-pro.com](mailto:info@cut-pro.com)



**Product:** CutPRO® Split Apron

**Model #:** 100215

CutPRO® Cut Resistant Aprons are manufactured using Cut-Tex® PRO – offering absolutely outstanding, tested and certified levels of cut, abrasion, tear and puncture resistance.



**Features and Benefits**

- Cut-Tex® PRO is used to provide excellent cut resistance
- Full cut protection
- Clip-on adjustable straps
- 100% latex free

**Suitable for professionals working in the following industries:**

- Glass and glazing
- Metal
- Ceramics
- Industrial manufacturing
- Recycling

**Material Content**

Cut-Tex® PRO, Nylon, Polyester, Cotton

**Cut Resistance**

EN ISO 13997 (TDM-100 Test) Level E

ANSI/ISEA 2016 Level A5

**Abrasion Resistance**

EN 388:2016 Level 3

**Tear Resistance**

EN 388:2016 Level 4

**Puncture Resistance**

EN 388:2016 Level 4

Sizes One size

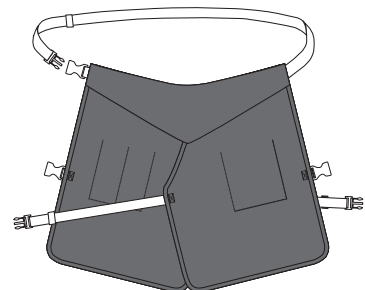
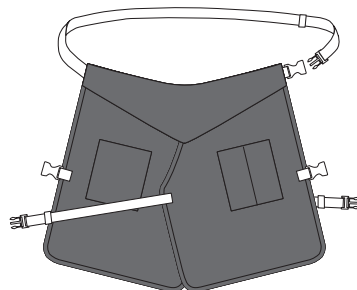
Colour Cut-Tex® PRO - Grey Marl

Place of Manufacture EU - CE PPE Regulation (EU) 2016/425



■ Protective areas using 100% Cut-Tex® PRO

□ Non-protected areas



This CutPRO® branded product is unavailable in the US, please contact us for other available branding.  
 CutPRO® branded products are unavailable in Canada, please contact us for other available branding options.  
 Notified Body BTTG Testing & Certification (0388)

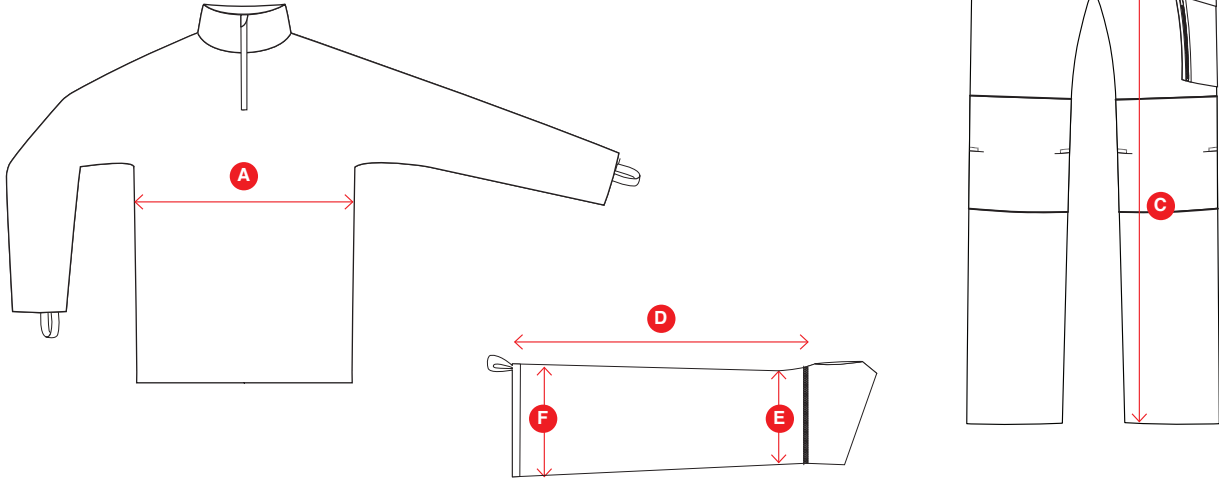


Visit our website: [www.cut-pro.com](http://www.cut-pro.com)

T: +44 (0) 845 5193 953 | E: [info@cut-pro.com](mailto:info@cut-pro.com)



# Size Guide



## CutPRO® Chest – Size Guide

	S	M	L	XL	2XL	3XL	4XL	5XL
A To fit CHEST (inches)	38-40"	40-42"	42-44"	44-46"	46-48"	48-50"	50-52"	52-54"
To fit CHEST (cm)	92-102	102-107	107-112	112-117	117-120	120-127	127-132	132-137

## CutPRO® Waist – Size Guide

B Waist Size (inches)	30"	32"	34"	36"	38"	40"	42"	44"	46"	48"
Waist Size (cm)	76	81	86	91	96	101	106	111	116	121
Tall Leg to fit 33"/86cm	33"	33"	33"	33"	33"	33"	33"	33"	N/A	N/A

## CutPRO® Sleeve – Size Guide

Size	S	M	L	XL
D Actual Sleeve Length (cm)	30	32	33	34
E Actual Cuff Width - flat (cm)	9	10	11	12
F Actual Arm Width - flat (cm)	11	12	13	14

## CutPRO® Apron (all with fully adjustable straps) – Size Guide

Product	Full Apron 100213	Half Apron 100214	Split Apron 100215
Actual width (cm) - waist	60	60	60
Actual length (cm)	90	75	55



Visit our website: [www.cut-pro.com](http://www.cut-pro.com)

T: +44 (0) 845 5193 953 | E: [info@cut-pro.com](mailto:info@cut-pro.com)

# Important Information

---

- Do not use this product for protection from high speed or serrated blade
- Do not use this product near moving machines or where there is a risk of entanglement
- Do not use this product for food processing
- This product is designed to minimise the risk of injury from potential hazards in the industrial work space (abrasions, cuts, tears and puncture)
- This product is used only for the designated purpose, no item of PPE can provide full protection
- This product is not designed to protect the hands, gloves are to be worn when required
- This product does not protect from hypodermic needles or similar sharp pointed objects
- Care and attention must always be taken when carrying out potential hazardous activities
- Cut-Tex® PRO is an ultra-high performance cut resistant fabric. However, it is not completely cut proof.

## Maintenance

- Do not wear this product if damaged, always inspect prior to use
- Do not leave in a contaminated condition, launder immediately
- When not worn, store this product in cool dry conditions away from direct sunlight
- Wash dark colours separately
- Do not wash with fabric conditioner
- Reshape whilst damp



# Contact

---

**CutPRO® Cut Resistant Clothing is part of PPSS Group**

## **PPSS Group**

Unit 603  
Avenue D  
Thorp Arch Estate  
Wetherby  
LS23 7FS  
United Kingdom

T: **+44 (0) 845 5193 953**

E: **info@ppss-group.com**

W: **www.ppss-group.com**



Visit our website: [www.cut-pro.com](http://www.cut-pro.com)

T: +44 (0) 845 5193 953 | E: [info@cut-pro.com](mailto:info@cut-pro.com)