

MCV

# COMPANY



## SERVIZI

- Prezzi competitivi.
- Consegne rapide anche per ingenti quantitativi.
- Articoli sempre disponibili nel nostro magazzino.
- Possibilità di realizzare prodotti speciali su richiesta da parte del cliente.
- Contatto diretto e servizio con l'azienda pre e post vendita.
- Supporto tecnico.



## SERVICE

- Competitive prices.
- Quick delivery time also for large quantities.
- Items always available in stock.
- Possibility to produce customized products on demand.
- Direct line and service with the Company before and after the sale.
- Technical assistance.

## AZIENDA

- Nata nel 1999, McV ha come obiettivo la precisa esigenza di soddisfare richieste sempre nuove di un mercato in evoluzione.
- Un'azienda "giovane", con l'esperienza di oltre 60 anni nel settore del valvolame, che i soci fondatori hanno acquisito con le altre realtà industriali del gruppo.
- Rapporto diretto tra azienda e clienti.
- Rete di vendita composta da professionisti specializzati nel settore.

## COMPANY

- Founded in 1999, McV is aimed to meet precise needs and ever-new demands in the evolving market.
- A "young" Company, with experience of over 60. years in the valve industry that the founders have gained in the other Companies of the Group.
- Direct relationship between Company and customers.
- Sales network made up of specialized professionals in the field.



La vendita e dei prodotti qui illustrati è regolata dalle "Condizioni Generali di Vendita" di McV - Millennium Valves Italy S.r.l., consultabili all'indirizzo [www.mcv-vg.com/it/customer\\_care](http://www.mcv-vg.com/it/customer_care) o richiedibili all'ufficio commerciale McV.

Tutti i dati riportati sui nostri cataloghi, listini prezzi, depliant, brochure, Cd-rom e pagine Web, e comunque su qualsiasi documento da noi rilasciato, si intendono approssimativi e non hanno per noi valore impegnativo, se non esplicitamente menzionato in fase d'offerta. E' nostra facoltà apportare modifiche agli articoli in produzione al fine di migliorarne ulteriormente la qualità, sostituire e/o togliere articoli in produzione, raffigurati a catalogo. E' fatto divieto di qualunque utilizzo dei nostri disegni e modelli.



The sale of the products indicated here is regulated by "General Terms and Conditions of Sale" of McV - Millennium Valves Italy S.r.l., that can be consulted on the website [www.mcv-vg.com/en/customer\\_care](http://www.mcv-vg.com/en/customer_care) or, by request, by McV's sales department.

All data published in our catalogues, price lists, folders, brochures, Cd-rom and Web pages and in any document issued by us are approximate and they are not binding for us, if they are not expressly mentioned in our offers. It is our faculty to introduce changes to the articles in production, in order to further improve their quality, to replace and/or to remove articles in production and represented in the catalogue. It is forbidden any use of our drawings and models.



# INDEX

## PRODOTTO

- Elevata qualità.
- Certificazioni di prodotto e di qualità.
- Controllo totale dalla produzione alla vendita, per assicurare al cliente finale il miglior servizio.
- Analisi in loco del prodotto.
- Vasta gamma di prodotti tecnici.

## PRODUCT

- High quality.
- Product and Quality Certifications.
- Full control from production to sale for ensuring the best service to the final customer.
- On-site.
- Wide range of technical products.



## Valvole Inox

Stainless Steel Valves

P. 4

GLOCK  
LYNX  
LEOPARD  
RUGER  
ONYX  
COUGAR

## Valvole Ghisa

Cast Iron Valves

P. 15

BLACK  
TAURUS  
DIABLO

## Valvole Ottone

Brass Valves

P. 29

TOP  
GREEN  
MINI  
MAGIC  
STAR  
EQUINOX  
PERFECT  
GOLD  
GARDEN



## McV 110000

Valvola a sfera F/F 2 pezzi inox  
AISI 316

modello pesante  
passaggio totale  
maniglia a leva con  
sistema di bloccaggio

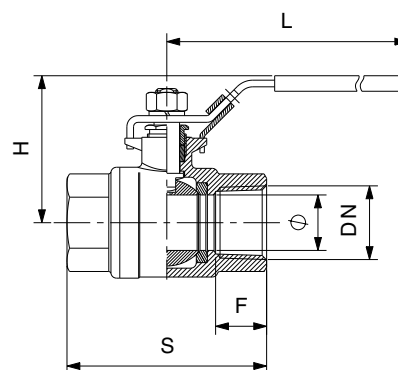
**Stainless steel AISI 316**

**two-piece F/F ball valve**

heavy type  
full bore  
lever handle with  
locking device



**ACCIAIO INOX  
STAINLESS STEEL**



**CONNESSIONI - CONNECTIONS:**

F: EN 10226 Rp (parallelo/parallel)

**LIMITE - LIMIT:**

- 20°C (in assenza di liquido) +120°C  
- 20°C (without liquid) +120°C

**NOTE - NOTE:**

La pressione max. di utilizzo (PN) si intende a temperatura ambiente di circa 23°C.  
The max. working pressure (PN) means at a room temperature of about 23°C.

DN	∅	F	S	H	L	PN	kg	P/Box	P/Cart.
1/4"	12,5	8	51	48	103	63	0,243	20	120
3/8"	12,5	13	51	48	103	63	0,223	20	120
1/2"	15	14	63	50	103	63	0,291	15	90
3/4"	20	18	74	57	126	63	0,514	8	48
1"	25	20	86	67	144	63	0,831	4	24
1"1/4	32	22	98	72	144	63	1,220	3	18
1"1/2	38	23	106	93	190	63	1,951	2	12
2"	50	25	122	100	190	63	2,538	-	6
2"1/2	65	31	159	116	224	50	5,085	-	4
3"	76	32	182	125	224	50	7,922	-	2
4"	94	38	226	166	295	50	14,109	-	1

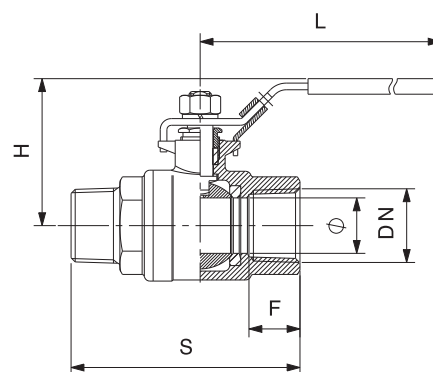
## McV 110010

Valvola a sfera M/F 2 pezzi inox  
 modello pesante  
 passaggio totale  
 maniglia a leva con  
 sistema di bloccaggio

**Stainless steel AISI 316**  
**two-piece M/F ball valve**  
 heavy type  
 full bore  
 lever handle  
 with locking device



**ACCIAIO INOX**  
**STAINLESS STEEL**



**CONNESSIONI - CONNECTIONS:**

F: EN 10226 Rp (parallelo/parallel)  
 M: EN 10226 R (conico/taper)

**LIMITE - LIMIT:**

- 20°C (in assenza di liquido) +120°C  
 - 20°C (without liquid) +120°C

**NOTE - NOTE:**

La pressione max. di utilizzo (PN) si intende a temperatura ambiente di circa 23°C.  
 The max. working pressure (PN) means at a room temperature of about 23°C.

DN	Ø	F	H	L	S	PN	kg	P/Box	P/Cart.
1/2"	15	14	50	103	78,5	63	0,299	10	60
3/4"	20	18	57	126	88,5	63	0,540	6	36
1"	25	20	67	144	100	63	0,840	3	18
1"1/4	32	22	72	144	110,5	63	1,211	2	12
1"1/2	38	23	93	190	121	63	1,937	2	12
2"	50	25	100	190	141,5	63	2,623	1	6

## McV 110100

Valvola a sfera F/F 3 pezzi inox  
AISI 316

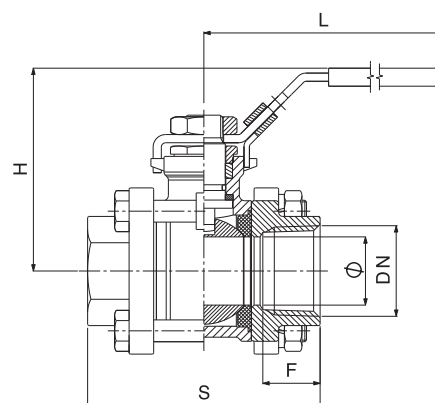
passaggio totale  
maniglia a leva con sistema  
di bloccaggio

Stainless steel AISI 316  
three-piece F/F ball valve

full bore  
lever handle  
with locking device



**ACCIAIO INOX**  
**STAINLESS STEEL**



**CONNESSIONI - CONNECTIONS:**

F: EN 10226 Rp (parallelo/parallel)

**LIMITE - LIMIT:**

- 20°C (in assenza di liquido) +120°C  
- 20°C (without liquid) +120°C

**NOTE - NOTE:**

La pressione max. di utilizzo (PN) si intende a temperatura ambiente di circa 23°C.  
The max. working pressure (PN) means at a room temperature of about 23°C.

DN	Ø	F	S	H	L	PN	kg	P/Box	P/Cart.
1/4"	11	13	64	69	140	70	0,400	10	60
3/8"	12,5	13	64	69	140	70	0,373	10	60
1/2"	15	19	72	72	140	70	0,519	8	48
3/4"	20	16	80	78	140	70	0,563	6	36
1"	25	22	85	90	162	70	1,152	4	24
1"1/4	32	20	105	95	162	70	1,753	2	12
1"1/2	38	23	113	105	188	70	2,411	2	12
2"	50	25	132	122	188	70	3,437	-	6

## McV 110101

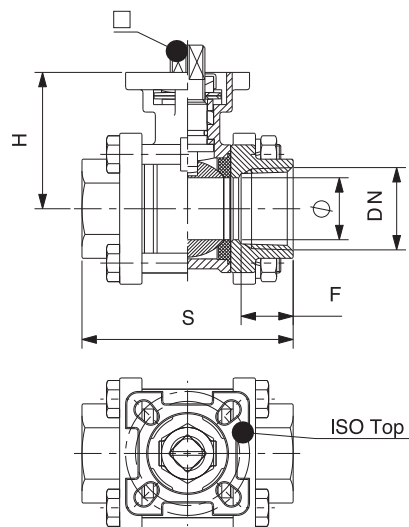
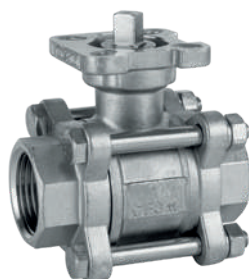
Valvola a sfera F/F 3 pezzi inox  
AISI 316

passaggio totale  
attacco ISO 5211  
per attuatore

Stainless steel AISI 316  
three-piece F/F ball valve

full bore  
ISO 5211  
connection for motor

**ACCIAIO INOX**  
**STAINLESS STEEL**



**CONNESSIONI - CONNECTIONS:**

F: EN 10226 Rp (parallelo/parallel)

**LIMITE - LIMIT:**

- 20°C (in assenza di liquido) +120°C

- 20°C (without liquid) +120°C

**NOTE - NOTE:**

La pressione max. di utilizzo (PN) si intende a temperatura ambiente di circa 23°C.

The max. working pressure (PN) means at a room temperature of about 23°C.

DN	Ø	F	S	H	ISO Top	∇	PN	kg	P/Box	P/Cart.
1/4"(M1)	11,5	13	64	39	F3/F4	9	70	0,419	10	60
3/8"(M1)	12,5	14	60	36	F3/F4	9	70	0,331	10	60
1/2"(M1)	15	19	72	42	F3/F4	9	70	0,534	8	48
3/4"(M1)	20	20	80	48	F3/F4	9	70	0,741	6	36
1"(M2)	25	21	85	55	F4/F5	9	70	1,081	4	24
1"1/4(M3)	32	24	106	60	F4/F5	11	70	1,726	2	12
1"1/2(M3)	38	24	114	70	F5/F7	11	70	2,426	2	12
2"(M5)	50	26	132	86	F5/F7	14	70	3,410	-	6
2"1/2(M7)	65	38	170	109	F7/F10	17	50	7,252	-	1
3"(M7)	76	38	186	118	F7/F10	17	50	9,886	-	1
4"(M7)	94	40	226	116	F7/F10	17	50	18,999	-	1

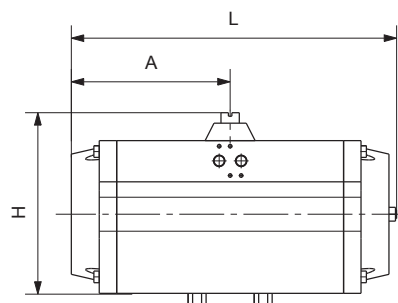
## McV 110109

Motore pneumatico doppio effetto

Double acting pneumatic motor

8

**ACCIAIO INOX**  
**STAINLESS STEEL**



**LIMITE - LIMIT:**  
- 0°C / +90°C

**NOTE - NOTE:**

La pressione max. di utilizzo (PN) si intende a temperatura ambiente di circa 23°C.

The max. working pressure (PN) means at a room temperature of about 23°C.

DN	H	L	ISO Top	∅	kg	P/Cart.
DE M01	91	119	F3	9	0,611	1
DE M02	91	119	F4	9	0,611	1
DE M03	111	160	F5	11	1,272	1
DE M05	133	175	F7	14	2,030	1
DE M07	196	246	F7	17	7,580	1
DE M08	133	175	F7	11	2,030	1
DE M09	143	177	F7	11	2,957	1
DE M10	143	239	F7	11	4,000	1
DE M11	196	246	F7/F10	14	7,580	1
DE M12	208	351	F7/F10	17	12,460	1
DE M13	248	418	F10	22	22,179	1
DE M14	305	444	F10	22	36,300	1



## McV 110050

Valvola a sfera F/F 2 pezzi inox  
AISI 316

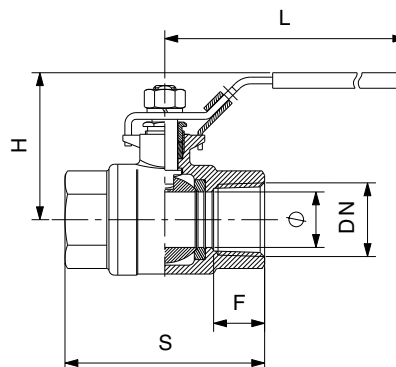
passaggio totale  
maniglia a leva con  
sistema di bloccaggio

**Stainless steel AISI 316**

**two-piece F/F ball valve**

full bore  
lever handle with  
locking device

**ACCIAIO INOX  
STAINLESS STEEL**



**CONNESSIONI - CONNECTIONS:**

F: EN 10226 Rp (parallelo/parallel)

**LIMITE - LIMIT:**

- 20°C (in assenza di liquido) +120°C  
- 20°C (without liquid) +120°C

**NOTE - NOTE:**

La pressione max. di utilizzo (PN) si intende a temperatura ambiente di circa 23°C.  
The max. working pressure (PN) means at a room temperature of about 23°C.

DN	Ø	F	S	H	L	PN	kg	P/Box	P/Cart.
1/2"	15	11	52	52	85	63	0,210	10	80
3/4"	20	12,5	58	59	100	63	0,340	6	48
1"	25	14	68	65	130	63	0,510	4	32
1"1/4	32	16	80	74	130	63	0,830	2	16
1"1/2	38	17	90	82	155	63	1,170	-	20
2"	48	18	105	94	155	63	1,540	-	15

## McV 110200

**Valvola a sfera 2 pezzi inox  
AISI 316**

passaggio totale  
scartamento F4  
flange PN16  
maniglia a leva inox

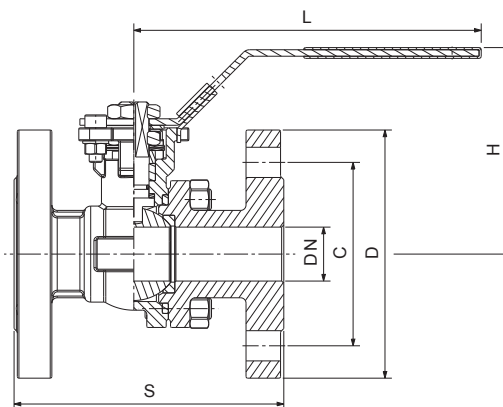
**Stainless steel AISI 316**

**two-piece ball valve**

full bore  
face to face F4  
flange PN16  
stainless steel lever handle

10

**ACCIAIO INOX  
STAINLESS STEEL**



**CONNESSIONI - CONNECTIONS:**

Flangia/Square EN1092-2

**LIMITE - LIMIT:**

- 20°C (in assenza di liquido) +120°C

- 20°C (without liquid) +120°C

**NOTE - NOTE:**

La pressione max. di utilizzo (PN) si intende

a temperatura ambiente di circa 23°C.

The max. working pressure (PN) means at a room temperature of about 23°C.

DN	β	S	H	L	D	C	PN	kg	P/Cart.
15	15	115	73	130	92	65	40	2,274	15
20	20	120	76	130	105	75	40	2,678	12
25	25	125	86	160	115	85	40	3,914	10
32	32	130	91	160	140	100	40	5,356	5
40	38	140	119	200	150	110	40	7,416	3
50	50	150	127	200	165	125	40	9,052	2
65	65	170	136	200	185	145	40	12,561	1
80	76	180	164	325	200	160	40	15,965	1
100	94	190	178	325	220	180	40	21,347	1

## McV 110150

Valvola a sfera F/F/F 3 vie inox  
AISI 316

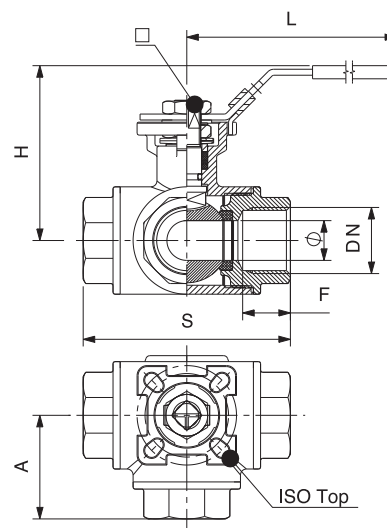
sfera forata a "T"  
passaggio ridotto  
maniglia a leva  
con sistema di bloccaggio

Stainless steel AISI 316 3-way F/F/F  
ball valve

"T" boring  
reduced bore  
lever handle with locking device



**ACCIAIO INOX**  
**STAINLESS STEEL**



**CONNESSIONI - CONNECTIONS:**

F: EN 10226 Rp (parallelo/parallel)

**LIMITE - LIMIT:**

- 20°C (in assenza di liquido) +120°C  
- 20°C (without liquid) +120°C

**NOTE - NOTE:**

La pressione max. di utilizzo (PN) si intende a temperatura ambiente di circa 23°C.  
The max. working pressure (PN) means at a room temperature of about 23°C.

DN	Ø	F	H	L	S	A	ISO Top	∇	PN	kg	P/Box	P/Cart.
1/2"	12,5	14	73	139	79	39,5	F3/F4	9	63	0,703	4	24
3/4"	16	18	80	139	83	41,5	F3/F4	9	63	0,948	3	18
1"	20	20	95	160	104	52	F4/F5	11	63	1,501	2	12
1"1/4	25	22	98	160	111	55,5	F4/F5	11	63	2,168	-	10
1"1/2	32	23	110	185	126	63	F5/F7	14	63	3,302	-	5
2"	38	25	119	185	147	73,5	F5/F7	14	63	5,065	-	3

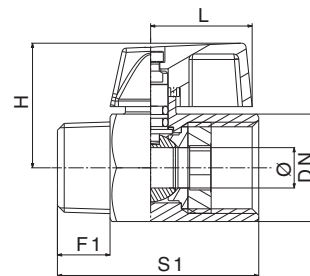
## McV 110800

**Valvola a sfera M/F inox  
AISI 316**  
da barra esagonale  
passaggio ridotto  
maniglia a leva alluminio

**Stainless steel AISI 316  
ball valve M/F**  
from hexagonal barstock  
reduced bore  
aluminium lever handle

12

**ACCIAIO INOX  
STAINLESS STEEL**



**CONNESSIONI - CONNECTIONS:**

F: EN 10226 Rp (parallelo/parallel)

M: EN 10226 R (conico/taper)

**LIMITE - LIMIT:**

- 20°C (in assenza di liquido) +120°C

- 20°C (without liquid) +120°C

**NOTE - NOTE:**

La pressione max. di utilizzo (PN) si intende a temperatura ambiente di circa 23°C.

The max. working pressure (PN) means at a room temperature of about 23°C.

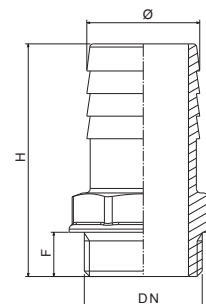
DN	Ø	F1	S1	H	L	kg	P/Box	P/Cart.
1/4"	7	9,9	42	26,5	23	0,080	30	180
3/8"	7	10	42	26,5	23	0,082	30	180
1/2"	9,2	12	46	28,3	23	0,114	25	150
3/4"	12,5	15,90	54	31,5	23	0,200	15	90



## McV 111000

Raccordo portagomma maschio  
inox AISI 316

Stainless steel AISI 316  
male hose-connection



DN	F	H	kg	P/Box	P/Cart.
1/4" x 9	10,5	42,5	0,020	28	168
3/8" x 11	11	49	0,033	28	168
1/2" x 15	14,5	57,5	0,049	28	168
3/4" x 20	15,5	66	0,066	21	126
1" x 25	18	73	0,133	9	54
1"1/4 x 33	20,5	79	0,183	7	42
1"1/2 x 40	20,5	83	0,224	5	30
2" x 52	25	92	0,386	4	24
2"1/2 x 67	27	99	0,632	-	6
3" x 80	30	107	0,887	-	5
4" x 100	39	145	1,962	-	4

**CONNESSIONI - CONNECTIONS:**

M: EN 10226 R (conico/taper)

**LIMITE - LIMIT:**

- 20°C (in assenza di liquido) +120°C  
- 20°C (without liquid) +120°C

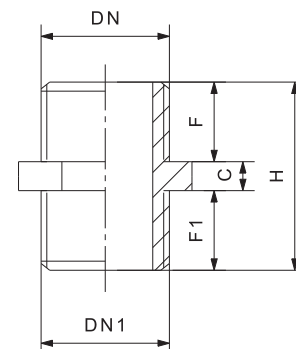
**NOTE - NOTE:**

La pressione max. di utilizzo (PN) si intende a temperatura ambiente di circa 23°C.  
The max. working pressure (PN) means at a room temperature of about 23°C.

## McV 111010

Nipplo M/M inox AISI 316

Stainless steel AISI 316 nipples M/M



DN	F	F1	H	C	kg	P/Box	P/Cart.
3/8" x 3/8"	11	11	27	5	0,024	41	246
3/8" x 1/2"	11	14,5	30,5	5	0,034	41	246
1/2" x 1/2"	14,5	14,5	34	5	0,050	41	246
1/2" x 3/4"	14,5	15,5	35,5	5,5	0,054	28	168
3/4" x 3/4"	15,5	15,5	36,5	5,5	0,077	28	168
3/4" x 1"	15,5	18	39,5	6	0,109	21	126
1" x 1"	18	18	42	6	0,095	21	126
1" x 1"1/4	18	20,5	45	6,5	0,135	10	60
1"1/4 x 1"1/4	20,5	20,5	47,5	6,5	0,146	10	60
1"1/2 x 1"1/2	20,5	20,5	47,5	6,5	0,238	7	42
2" x 2"	25	25	57	7	0,292	4	24

**CONNESSIONI - CONNECTIONS:**

M: EN 10226 R (conico/taper)

**LIMITE - LIMIT:**

- 20°C (in assenza di liquido) +120°C  
- 20°C (without liquid) +120°C

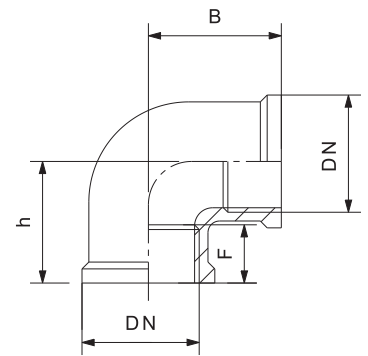
**NOTE - NOTE:**

La pressione max. di utilizzo (PN) si intende a temperatura ambiente di circa 23°C.  
The max. working pressure (PN) means at a room temperature of about 23°C.

## McV 111015

Gomito 90° F/F inox AISI 316

Stainless steel AISI 316 elbow 90° F/F



**ACCIAIO INOX**  
**STAINLESS STEEL**

14

DN	F	B	kg	P/Box	P/Cart.
1/2"	11	27	0,064	30	180
3/4"	12	32	0,095	16	96
1"	13	38	0,165	11	66
1"1/4	13	45	0,263	5	30
1"1/2	16	48	0,339	4	24
2"	16	57	0,544	2	12

**CONNESSIONI - CONNECTIONS:**

F: EN 10226 Rp (parallelo/paralle)

**LIMITE - LIMIT:**

- 20°C (in assenza di liquido) +120°C  
- 20°C (without liquid) +120°C

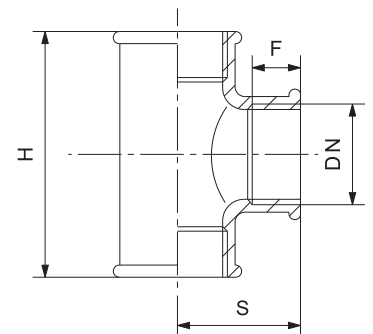
**NOTE - NOTE:**

La pressione max. di utilizzo (PN) si intende a temperatura ambiente di circa 23°C.  
The max. working pressure (PN) means at a room temperature of about 23°C.

## McV 111020

Raccordo a "T" F/F/F inox AISI 316

Stainless steel AISI 316 "Tee" fitting 90° F/F/F



**ACCIAIO INOX**  
**STAINLESS STEEL**

DN	F	H	kg	P/Box	P/Cart.
1/2"	11	54	0,087	17	102
3/4"	12	64	0,125	12	72
1"	13	76	0,217	10	60
1"1/4	13	90	0,331	5	30
1"1/2	16	96	0,450	3	18
2"	16	114	0,714	1	6

**CONNESSIONI - CONNECTIONS:**

F: EN 10226 Rp (parallelo/paralle)

**LIMITE - LIMIT:**

- 20°C (in assenza di liquido) +120°C  
- 20°C (without liquid) +120°C

**NOTE - NOTE:**

La pressione max. di utilizzo (PN) si intende a temperatura ambiente di circa 23°C.  
The max. working pressure (PN) means at a room temperature of about 23°C.

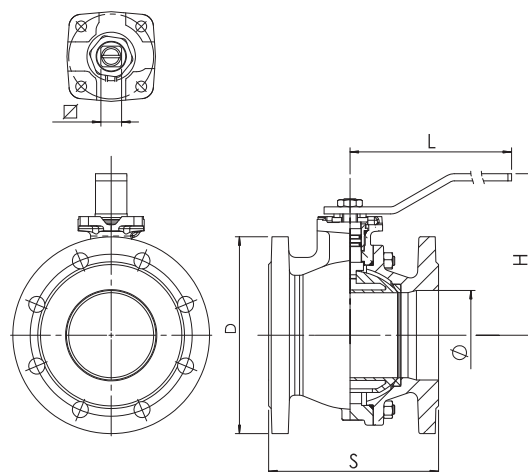
## McV 112000

### Valvola a sfera flangiata in ghisa GJS400 passaggio totale

attacco ISO 5211 per attuatore  
scartamento F4  
flange PN 16  
maniglia a leva acciaio

### Cast iron GJS400 flanged ball valve full bore

ISO 5211 mounting pad for actuator  
face to face F4  
flanges PN 16  
steel lever handle



#### CONNESSIONI - CONNECTIONS:

Flangia/Flange EN 1092-2

#### LIMITE - LIMIT:

- 10°C (in assenza di liquido) +100°C  
- 10°C (without liquid) +100°C

#### NOTE - NOTE:

La pressione max. di utilizzo (PN) si intende a temperatura ambiente di circa 23°C.  
The max. working pressure (PN) means at a room temperature of about 23°C.

DN	Ø	S	H	L	D	ISO Top	∇	PN	kg	P/Car.
20	20	120	84	160	105	F04	9	16	3,300	1
25	25	125	96	170	115	F04	11	16	4,200	1
32	32	130	101	170	140	F04	11	16	5,800	1
40	40	140	125	230	150	F05	14	16	7,260	1
50	50	150	135	230	165	F05	14	16	9,000	1
65	63	170	143	230	185	F05	14	16	10,500	1
80	76	180	165	280	200	F07	17	16	15,500	1
100	95	190	180	360	220	F07	17	16	18,500	1
125	120	200	225	450	250	F10	22	16	28,000	1
150	145	210	243	560	285	F10	22	16	38,500	1

## McV 112001

### Valvola a sfera flangiata in ghisa passaggio totale

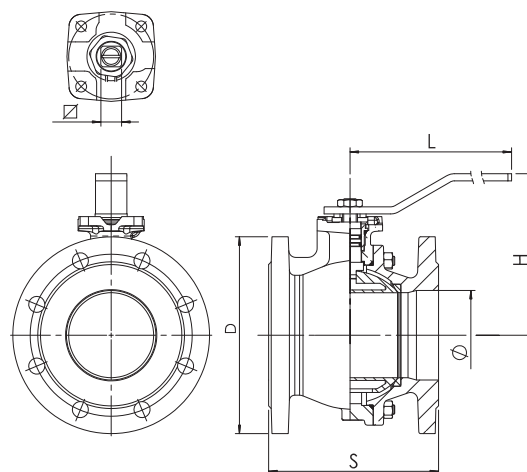
sfera e stelo acciaio inox AISI 304  
attacco ISO 5211 per attuatore  
scartamento F4  
flange PN 16  
maniglia a leva acciaio

### Cast iron flanged ball valve full bore

AISI 304 stainless steel ball & stem  
ISO 5211 mounting pad for actuator  
face to face F4  
flanges PN 16  
steel lever handle



16



#### CONNESSIONI - CONNECTIONS:

Flangia/Flange EN 1092-2

#### LIMITE - LIMIT:

- 10°C (in assenza di liquido) +100°C  
- 10°C (without liquid) +100°C

#### NOTE - NOTE:

La pressione max. di utilizzo (PN) si intende a temperatura ambiente di circa 23°C.  
The max. working pressure (PN) means at a room temperature of about 23°C.

DN	Ø	S	H	L	D	ISO Top	∇	PN	kg	P/Car.
20	20	120	84	160	105	F04	9	16	3,300	1
25	25	125	96	170	115	F04	11	16	4,200	1
32	32	130	101	170	140	F04	11	16	5,800	1
40	40	140	125	230	150	F05	14	16	7,260	1
50	50	150	135	230	165	F05	14	16	9,000	1
65	63	170	143	230	185	F05	14	16	10,500	1
80	76	180	165	280	200	F07	17	16	15,500	1
100	95	190	180	360	220	F07	17	16	18,500	1
125	120	200	225	450	250	F10	22	16	28,000	1
150	145	210	243	560	285	F10	22	16	38,500	1



## McV 115000

Valvola a farfalla tipo wafer in ghisa GJS500  
disco in acciaio inox AISI 316

guarnizione EPDM

foratura a 5 standard PN 6, 10, 16

ANSI 150

BS tabella E

maniglia sigillabile a leva in ghisa

GJS500 ductile iron wafer type butterfly valve  
stainless steel disc AISI 316

EPDM gasket 5

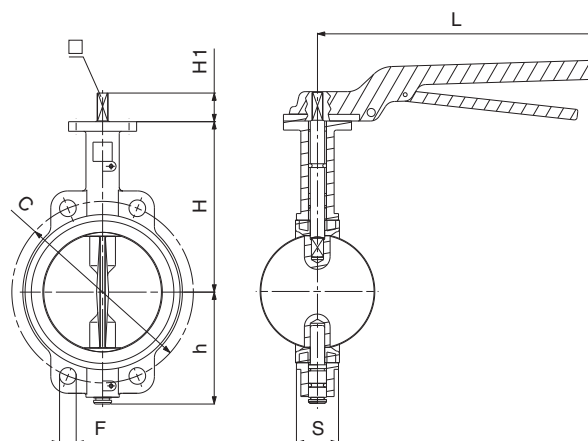
standard holes PN 6, 10, 16

ANSI 150

BS table E

cast iron sealing

lever handle



**LIMITE - LIMIT:**

- 20°C (in assenza di liquido) +110°C

- 20°C (without liquid) +110°C

**NOTE - NOTE:**

La pressione max. di utilizzo (PN) si intende a temperatura ambiente di circa 23°C.

The max. working pressure (PN) means at a room temperature of about 23°C.

DN	F	C	S	h	H	L	ISO Top	∅	H1	PN	kg	P/Cart.
50	18	125	45	85	162	260	F7	11	30	16	3,672	1
65	18	145	48	98	175	260	F7	11	30	16	3,967	1
80	18	160	49	104	181	260	F7	11	30	16	4,315	1
100	18	180	55	123	200	260	F7	11	30	16	5,684	1
125	18	210	58	136	213	260	F7	14	30	16	6,588	1
150	22	240	59	149	225	260	F7	14	30	16	8,593	1
200	22	295	64	186	260	360	F10	17	40	16	14,639	1
250	26	350	70	212	292	360	F10	22	40	16	20,858	1
300*	26	400	80	251	337	360	F10	22	40	16	37,801	1

\* con riduttore di manovra - with gear box



## McV 115005

Valvola a farfalla tipo wafer in ghisa GJL250  
disco in ghisa sferoidale GJS400

guarnizione EPDM

foratura a 5 standard PN 6, 10, 16

ANSI 150

BS tabella E maniglia sigillabile a leva in ghisa

**GJL250 cast iron wafer type butterfly valve**

**GJS400 ductile iron disc**

EPDM gasket

5 standard holes PN 6, 10, 16

ANSI 150

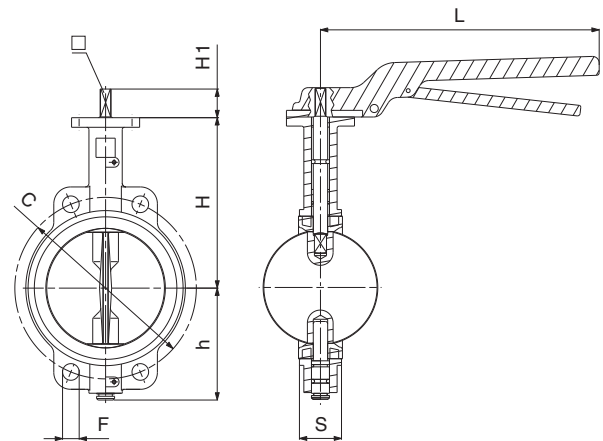
BS table E

cast iron sealing

lever handle



18



**LIMITE - LIMIT:**

- 20°C (in assenza di liquido) +110°C

- 20°C (without liquid) +110°C

**NOTE - NOTE:**

La pressione max. di utilizzo (PN) si intende

a temperatura ambiente di circa 23°C.

The max. working pressure (PN) means at a room temperature of about 23°C.

DN	F	C	S	h	H	L	ISO Top	∅	H1	PN	kg	P/Cart.
50	18	125	45	85	162	260	F7	11	30	16	3,496	1
65	18	145	48	98	175	260	F7	11	30	16	4,017	1
80	18	160	49	104	181	260	F7	11	30	16	4,427	1
100	18	180	55	123	200	260	F7	11	30	16	5,751	1
125	18	210	58	136	213	260	F7	14	30	16	6,876	1
150	22	240	59	149	225	260	F7	14	30	16	8,015	1
200	22	295	64	186	260	360	F10	17	40	16	14,184	1
250	26	350	70	212	292	360	F10	22	40	16	21,270	1
300*	26	400	80	251	337	360	F10	22	40	16	30,643	1

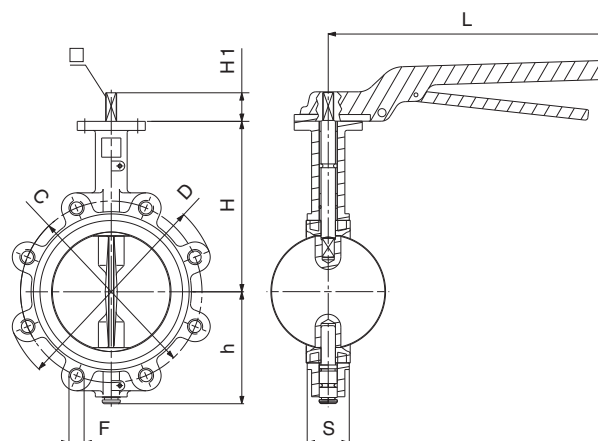
\* con riduttore di manovra - with gear box



## McV 115010

Valvola a farfalla tipo lug  
 in ghisa GJS500  
 disco in acciaio inox AISI 316  
 flange PN 16  
 guarnizione EPDM  
 maniglia sigillabile  
 a leva in ghisa

GJS500 ductile iron lug  
 type butterfly valve  
 stainless steel disc AISI 316  
 flanges PN 16  
 EPDM gasket  
 cast iron sealing  
 lever handle



**LIMITE - LIMIT:**

- 20°C (in assenza di liquido) +110°C  
 - 20°C (without liquid) +110°C

**NOTE - NOTE:**

La pressione max. di utilizzo (PN) si intende a temperatura ambiente di circa 23°C.  
 The max. working pressure (PN) means at a room temperature of about 23°C.

DN	F	C	D	S	h	H	L	ISO Top	∅	H1	PN	kg	P/Car.
50	4xM16	125	157	45	85	162	260	F7	11	30	16	4,427	1
65	4xM16	145	180	48	89	175	260	F7	11	30	16	5,147	1
80	8xM16	160	192	49	104	181	260	F7	11	30	16	5,851	1
100	8xM16	180	222	55	123	200	260	F7	11	30	16	7,472	1
125	8xM16	210	256	58	136	213	260	F7	14	30	16	9,701	1
150	8xM20	240	288	59	149	225	260	F7	14	30	16	11,691	1
200	12xM20	295	340	64	182	260	360	F10	17	40	16	20,786	1



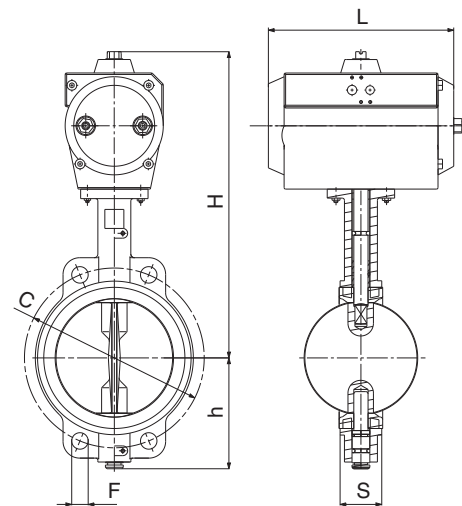
## McV 115020

Valvola a farfalla tipo wafer in ghisa GJS500  
 disco in acciaio inox AISI 316  
 guarnizione EPDM  
 foratura a 5 standard PN 6, 10, 16  
 ANSI 150  
 BS tabella E  
 motore pneumatico doppio effetto

GJS500 ductile iron wafer type butterfly  
 valve  
 stainless steel disc AISI 316  
 EPDM gasket  
 5 standard holes PN 6, 10, 16  
 ANSI 150  
 BS table E  
 double acting pneumatic motor



20



**LIMITE - LIMIT:**

- 0°C (in assenza di liquido) +90°C  
 - 0°C (without liquid) +90°C

**NOTE - NOTE:**

La pressione max. di utilizzo (PN) si intende a temperatura ambiente di circa 23°C.  
 The max. working pressure (PN) means at a room temperature of about 23°C.

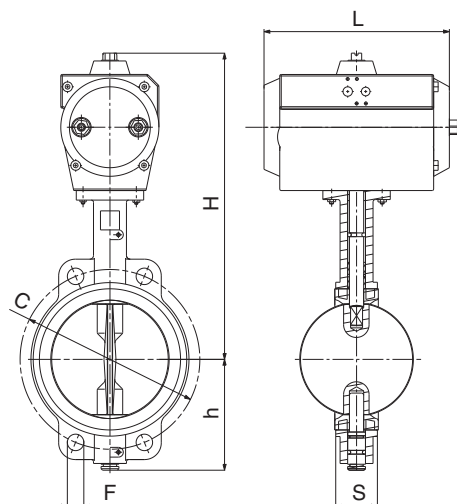
DN	F	C	S	h	H	L	ISO Top	∅	PN	kg	P/Car.
50 (M08)	18	125	45	85	295	175	F7	11	16	5,738	1
65 (M08)	18	145	48	98	307	175	F7	11	16	6,356	1
80 (M09)	18	160	49	104	324	177	F7	11	16	7,489	1
100 (M10)	18	180	55	123	343	239	F7	11	16	9,888	1
125 (M11)	18	210	58	136	409	246	F7	14	16	14,709	1
150 (M11)	22	240	59	149	421	246	F7	14	16	16,254	1
200 (M12)	22	295	64	186	468	351	F10	17	16	28,387	1
250 (M13)	26	350	70	212	540	418	F10	22	16	43,652	1
300 (M14)	26	400	80	251	642	444	F10	22	16	67,774	1



## McV 115025

Valvola a farfalla tipo wafer in ghisa GJL250  
 disco in ghisa sferoidale GJS400  
 guarnizione EPDM  
 foratura a 5 standard PN 6, 10, 16  
 ANSI 150  
 BS tabella E  
 motore pneumatico doppio effetto

GJL250 cast iron wafer type butterfly valve  
 GJS400 ductile iron disc  
 EPDM gasket  
 5 standard holes PN 6, 10, 16  
 ANSI 150  
 BS table E  
 double acting pneumatic motor



**LIMITE - LIMIT:**

- 0°C (in assenza di liquido) +90°C  
 - 0°C (without liquid) +90°C

**NOTE - NOTE:**

La pressione max. di utilizzo (PN) si intende a temperatura ambiente di circa 23°C.  
 The max. working pressure (PN) means at a room temperature of about 23°C.

DN	F	C	S	h	H	L	ISO Top	∅	PN	kg	P/Car.
50 (M08)	18	125	45	85	295	175	F7	11	16	5,738	1
65 (M08)	18	145	48	98	308	175	F7	11	16	6,356	1
80 (M09)	18	160	49	104	324	177	F7	11	16	7,489	1
100 (M10)	18	180	55	123	343	239	F7	11	16	10,094	1
125 (M11)	18	210	58	136	508	246	F7	14	16	15,018	1
150 (M11)	22	240	59	149	421	246	F7	14	16	16,563	1
200 (M12)	22	295	64	186	468	351	F10	17	16	28,490	1
250 (M13)	26	350	70	212	540	418	F10	22	16	44,064	1
300 (M14)	26	400	80	251	642	444	F10	22	16	67,980	1



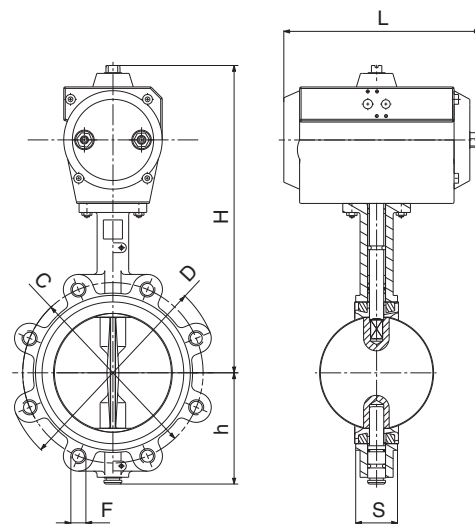
## McV 115030

Valvola a farfalla tipo lug in ghisa GJS500  
 disco in acciaio inox AISI 316  
 flange PN 16  
 guarnizione EPDM  
 motore pneumatico doppio effetto

GJS500 ductile iron lug type butterfly valve  
 stainless steel disc AISI 316  
 flanges PN 16  
 EPDM gasket  
 double acting pneumatic motor



22



**LIMITE - LIMIT:**

- 0°C (in assenza di liquido) +90°C  
 - 0°C (without liquid) +90°C

**NOTE - NOTE:**

La pressione max. di utilizzo (PN) si intende a temperatura ambiente di circa 23°C.  
 The max. working pressure (PN) means at a room temperature of about 23°C.

DN	F	C	D	S	h	H	L	ISO Top	∠	PN	kg	P/Car.
50 (M08)	4xM16	125	157	45	85	295	175	F7	11	16	6,459	1
65 (M08)	4xM16	145	180	48	89	308	175	F7	11	16	7,077	1
80 (M09)	8xM16	160	192	49	104	324	177	F7	11	16	8,725	1
100 (M10)	8xM16	180	222	55	123	343	239	F7	11	16	11,433	1
125 (M11)	8xM16	210	256	58	136	508	246	F7	14	16	17,490	1
150 (M11)	8xM20	240	288	59	149	421	246	F7	14	16	18,592	1
200 (M12)	12xM20	295	340	64	182	468	351	F10	17	16	32,713	1



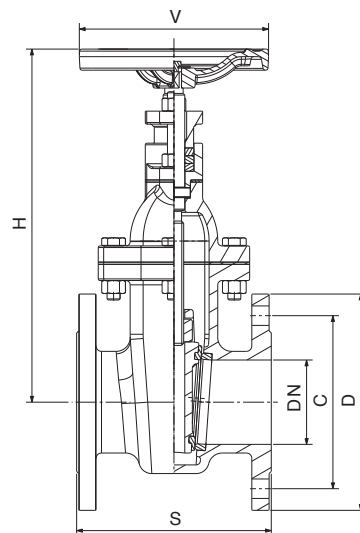
## McV 116000

Saracinesca in ghisa GJL250 a corpo piatto  
scartamento F4

vite interna  
tenuta metallica  
flange PN 16

GJL250 cast iron metal seated gate valve flat body face  
to face F4

inside screw  
flanges PN 16



**CONNESSIONI - CONNECTIONS:**

Flangia/Square EN1092-2

**LIMITE - LIMIT:**

- 20°C (in assenza di liquido) +110°C  
- 20°C (without liquid) +110°C

**NOTE - NOTE:**

La pressione max. di utilizzo (PN) si intende a temperatura ambiente di circa 23°C.

The max. working pressure (PN) means at a room temperature of about 23°C.

DN	S	H	V	D	C	PN	kg	P/Cart.
50	150	272	140	165	125	16	13,473	1
65	170	304	160	185	145	16	16,563	1
80	180	340	180	200	160	16	21,396	1
100	190	360	180	220	180	16	25,859	1
125	200	434	200	250	210	16	34,103	1
150	210	467	240	285	240	16	44,867	1
200	230	556	240	340	295	16	70,143	1
250	250	686	360	405	355	16	133,250	1
300	270	742	360	460	410	16	159,650	1



## McV 116005

Saracinesca in ghisa GJS400 a corpo piatto  
scartamento F4

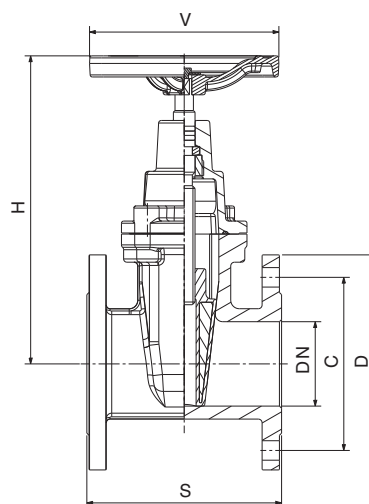
vite interna  
cuneo gommato  
flange PN 16

GJS400 ductile iron resilient seated gate valve flat body  
face to face F4

inside screw  
flanges PN 16



24



**CONNESSIONI - CONNECTIONS:**

Flangia/Square EN1092-2

**LIMITE - LIMIT:**

- 20°C (in assenza di liquido) +110°C

- 20°C (without liquid) +110°C

**NOTE - NOTE:**

La pressione max. di utilizzo (PN) si intende a temperatura ambiente di circa 23°C.

The max. working pressure (PN) means at a room temperature of about 23°C.

DN	S	H	V	D	C	PN	kg	P/Cart.
50	150	240	180	165	125	16	10,506	1
65	170	275	180	185	145	16	12,360	1
80	180	300	200	200	160	16	13,407	1
100	190	330	250	220	180	16	21,210	1
125	200	460	280	250	210	16	31,910	1
150	210	460	280	285	240	16	33,990	1
200	230	520	340	340	295	16	48,730	1
250	250	618	400	405	355	16	77,250	1
300	270	705	400	460	410	16	106,049	1





## McV 116006

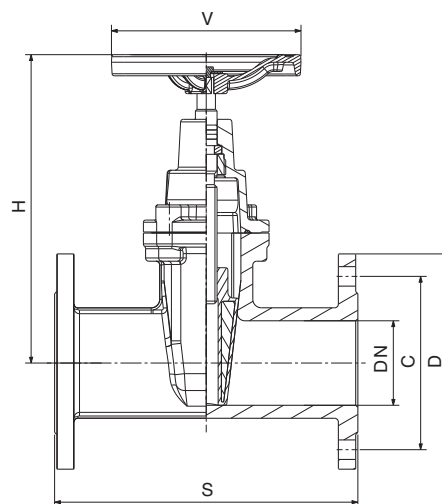
Saracinesca in ghisa GJS400 a corpo ovale  
scartamento F5

vite interna  
cuneo gommato  
flange PN 16

GJS400 ductile iron resilient seated gate valve oval body

face to face F5

inside screw  
flanges PN 16



**CONNESSIONI - CONNECTIONS:**

Flangia/Square EN1092-2

**LIMITE - LIMIT:**

- 20°C (in assenza di liquido) +110°C  
- 20°C (without liquid) +110°C

**NOTE - NOTE:**

La pressione max. di utilizzo (PN) si intende a temperatura ambiente di circa 23°C.

The max. working pressure (PN) means at a room temperature of about 23°C.

DN	S	H	V	D	C	PN	kg	P/Cart.
50	250	240	180	165	125	16	14,420	1
65	270	275	180	185	145	16	12,906	1
80	280	300	200	200	160	16	16,439	1
100	300	330	250	220	180	16	21,419	1
125	325	460	280	250	210	16	50,457	1
150	350	460	280	285	240	16	59,740	1
200	400	520	340	340	295	16	57,680	1
250	450	618	400	405	355	16	89,610	1
300	500	705	400	460	410	16	114,330	1

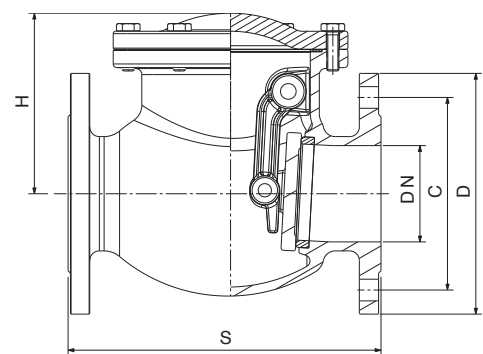


## McV 116015

Valvola di ritegno a clapet in ghisa GJL250  
scartamento F6  
flange PN 16

GJL250 cast iron swing check valve  
face to face F6  
flanges PN 16

26



**CONNESSIONI - CONNECTIONS:**

Flangia/Square EN1092-2

**LIMITE - LIMIT:**

- 20°C (in assenza di liquido) +110°C

- 20°C (without liquid) +110°C

**NOTE - NOTE:**

La pressione max. di utilizzo (PN) si intende a temperatura ambiente di circa 23°C.

The max. working pressure (PN) means at a room temperature of about 23°C.

DN	S	H	D	C	PN	kg	P/Cart.
40	180	105	150	110	16	11,845	1
50	200	118	165	125	16	14,008	1
65	240	124	185	145	16	13,071	1
80	260	144	200	160	16	19,673	1
100	300	154	220	180	16	24,690	1
125	350	179	250	210	16	32,765	1
150	400	184	285	240	16	46,350	1
200	500	245	340	295	16	89,600	1



## McV 116020

Filtro raccoglitore d'impurità a "Y" in ghisa GJL250  
scartamento F6  
flange PN 16

GJL250 cast iron "Y" strainer  
face to face F6  
flanges PN 16



27

**CONNESSIONI - CONNECTIONS:**

Flangia/Square EN1092-2

**LIMITE - LIMIT:**

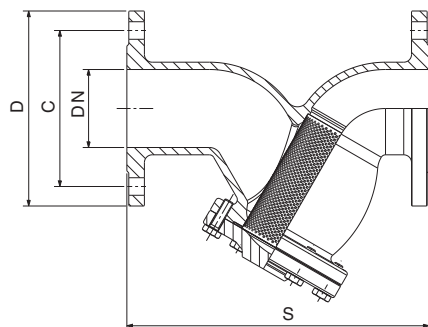
- 20°C (in assenza di liquido) +110°C

- 20°C (without liquid) +110°C

**NOTE - NOTE:**

La pressione max. di utilizzo (PN) si intende a temperatura ambiente di circa 23°C.

The max. working pressure (PN) means at a room temperature of about 23°C.



DN	S	D	C	PN	kg	P/Cart.
15	130	95	65	16	2,174	1
20	150	105	75	16	3,358	1
25	160	115	85	16	4,738	1
32	180	140	100	16	6,180	1
40	200	150	110	16	7,416	1
50	230	165	125	16	11,866	1
65	290	185	145	16	16,995	1
80	310	200	160	16	19,467	1
100	350	220	180	16	25,441	1
125	400	250	210	16	37,183	1
150	480	285	240	16	51,706	1
200	600	340	295	16	91,670	1
250	730	405	355	16	139,565	1
300	850	460	410	16	190,447	1

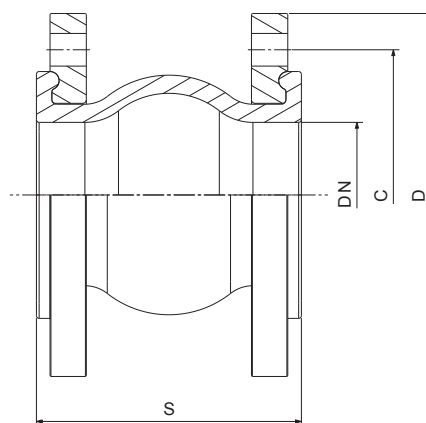
## McV 116025

Giunto antivibrante in gomma EPDM  
flange mobili PN 16

EPDM rubber anti-vibration flexible joint  
swivel flanges PN 16



28



**CONNESSIONI - CONNECTIONS:**

Flangia/Square EN1092-2

**LIMITE - LIMIT:**

- 20°C (in assenza di liquido) +110°C

- 20°C (without liquid) +110°C

**NOTE - NOTE:**

La pressione max. di utilizzo (PN) si intende a temperatura ambiente di circa 23°C.

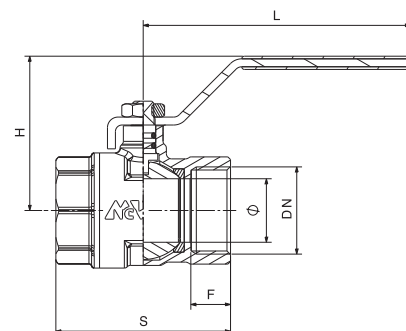
The max. working pressure (PN) means at a room temperature of about 23°C.

DN	S	D	C	PN	kg	P/Cart.
32	95	140	100	16	3,183	1
40	95	150	110	16	3,671	1
50	105	165	125	16	4,998	1
65	115	185	145	16	5,980	1
80	135	200	160	16	6,459	1
100	150	220	180	16	7,752	1
125	165	250	210	16	9,069	1
150	180	285	240	16	14,582	1
200	210	340	295	16	18,886	1
250	230	405	355	16	27,091	1
300	245	460	410	16	28,840	1

## McV 10000

**Valvola a sfera F/F**  
passaggio totale  
maniglia a leva acciaio

**Ball valve F/F**  
full bore  
steel lever handle



**CONNESSIONI - CONNECTIONS:**

F: ISO228/1

**LIMITE - LIMIT:**

- 10°C (in assenza di liquido) +90°C

- 10°C (without liquid) +90°C

**NOTE - NOTE:**

La pressione max. di utilizzo (PN) si intende a temperatura ambiente di circa 23°C.

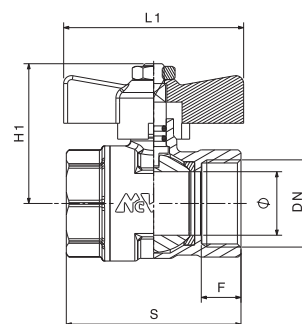
The max. working pressure (PN) means at a room temperature of about 23°C.

DN	Ø	F	S	H	L	PN	kg	P/Cart.
1/4"	10	10	42	42	80	40	0,136	120
3/8"	10	10	42	42	80	40	0,127	120
1/2"	14,5	11	47	43	80	40	0,155	120
3/4"	19	13	57	52	100	32	0,266	100
1"	24	15	66	55	100	32	0,401	60
1 1/4"	30,5	16	77	69	110	25	0,569	40
1 1/2"	37	17	86	82	143	25	0,840	20
2"	47	18	100	90	143	25	1,287	16
2 1/2"	60	23	126	104	160	25	2,087	10
3"	75	25	147	143	265	16	3,729	6
4"	94	29	177	155	265	16	6,071	4

## McV 10005

**Valvola a sfera F/F**  
passaggio totale  
maniglia a farfalla alluminio

**Ball valve F/F**  
full bore  
aluminium butterfly handle



**CONNESSIONI - CONNECTIONS:**

F: ISO228/1

**LIMITE - LIMIT:**

- 10°C (in assenza di liquido) +90°C

- 10°C (without liquid) +90°C

**NOTE - NOTE:**

La pressione max. di utilizzo (PN) si intende a temperatura ambiente di circa 23°C.

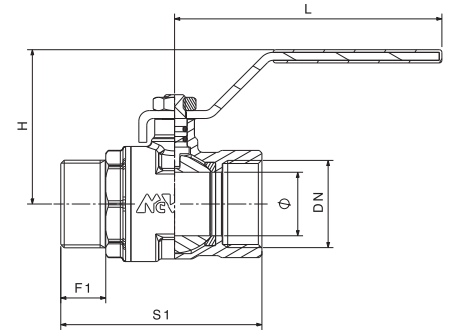
The max. working pressure (PN) means at a room temperature of about 23°C.

DN	Ø	F	S	H1	L1	PN	kg	P/Cart.
1/4"	10	10	42	33	44	40	0,108	120
3/8"	10	10	42	34	52	40	0,097	120
1/2"	14,5	11	46	39	44	40	0,129	120
3/4"	19	13	57	45	54	32	0,245	100
1"	24	15	66	51	62	32	0,374	60

## McV 10010

**Valvola a sfera M/F**  
passaggio totale  
maniglia a leva acciaio

**Ball valve M/F**  
full bore  
steel lever handle



**CONNESSIONI - CONNECTIONS:**

M/F: ISO228/1

**LIMITE - LIMIT:**

- 10°C (in assenza di liquido) +90°C

- 10°C (without liquid) +90°C

**NOTE - NOTE:**

La pressione max. di utilizzo (PN) si intende a temperatura ambiente di circa 23°C.

The max. working pressure (PN) means at a room temperature of about 23°C.

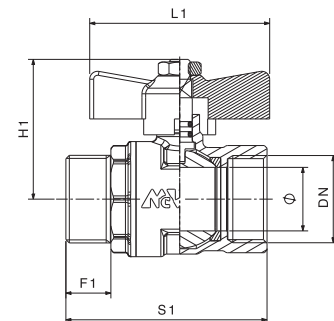
30

DN	Ø	F1	S1	H	L	PN	kg	P/Cart.
1/4"	8,8	10	46	43	80	40	0,136	120
3/8"	10	10	46	42	80	40	0,128	120
1/2"	14,5	13	54	43	80	40	0,165	120
3/4"	19	14	64	53	104	32	0,279	100
1"	24	17	76	58	104	32	0,405	60
1"1/4	30,5	17	86	69	110	25	0,575	40
1"1/2	37	19	100	82	144	25	0,911	20
2"	47	21	112	90	144	25	1,346	16

## McV 10015

**Valvola a sfera M/F**  
passaggio totale  
maniglia a farfalla alluminio

**Ball valve M/F**  
full bore  
aluminium butterfly handle



**CONNESSIONI - CONNECTIONS:**

M/F: ISO228/1

**LIMITE - LIMIT:**

- 10°C (in assenza di liquido) +90°C

- 10°C (without liquid) +90°C

**NOTE - NOTE:**

La pressione max. di utilizzo (PN) si intende a temperatura ambiente di circa 23°C.

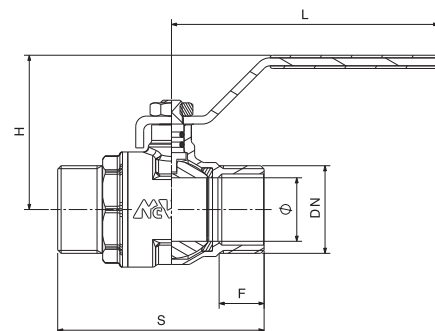
The max. working pressure (PN) means at a room temperature of about 23°C.

DN	Ø	F1	S1	H1	L1	PN	kg	P/Cart.
1/4"	8,8	10	46	33	44	40	0,110	120
3/8"	10	10	46	34	44	40	0,096	120
1/2"	14,5	13	54	37	44	40	0,145	120
3/4"	19	14	64	42	54	32	0,252	100
1"	24	17	76	48	68	32	0,402	60

## McV 10020

Valvola a sfera M/M  
passaggio totale  
maniglia a leva acciaio

Ball valve M/M  
full bore  
steel lever handle



**CONNESSIONI - CONNECTIONS:**

M: ISO228/1

**LIMITE - LIMIT:**

- 10°C (in assenza di liquido) +90°C

- 10°C (without liquid) +90°C

**NOTE - NOTE:**

La pressione max. di utilizzo (PN) si intende a temperatura ambiente di circa 23°C.

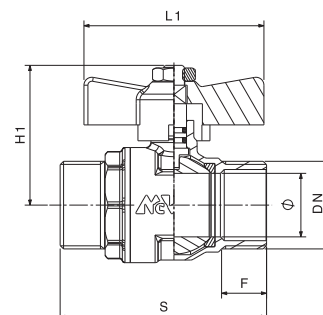
The max. working pressure (PN) means at a room temperature of about 23°C.

DN	∅	F	S	H	L	PN	kg	P/Cart.
3/8"	10	10	48	42	80	40	0,124	120
3/8"x1/2"	10	11	49	42	80	40	0,124	120
1/2"	14,5	13	56	43	80	40	0,159	120
3/4"	19	14	65	57	100	32	0,266	100
1"	24	17	78	58	100	32	0,392	60

## McV 10025

Valvola a sfera M/M  
passaggio totale  
maniglia a farfalla alluminio

Ball valve M/M  
full bore  
aluminium butterfly handle



**CONNESSIONI - CONNECTIONS:**

M: ISO228/1

**LIMITE - LIMIT:**

- 10°C (in assenza di liquido) +90°C

- 10°C (without liquid) +90°C

**NOTE - NOTE:**

La pressione max. di utilizzo (PN) si intende a temperatura ambiente di circa 23°C.

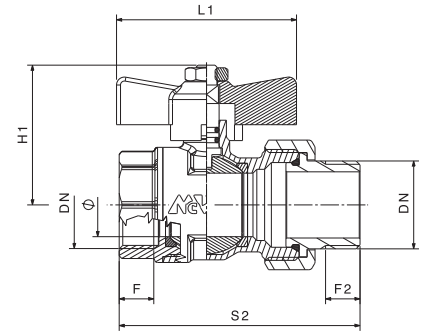
The max. working pressure (PN) means at a room temperature of about 23°C.

DN	∅	F	S	H1	L1	PN	kg	P/Cart.
3/8"	10	10	48	33	44	40	0,094	120
3/8"x1/2"	10	11	49	33	44	40	0,099	120
1/2"	14,5	13	56	38	44	40	0,136	120
3/4"	19	14	65	46	54	32	0,240	100
1"	24	17	78	51	68	32	0,385	60

## McV 10050

**Valvola a sfera con bocchettone M/F**  
passaggio totale  
maniglia a farfalla alluminio

**Ball valve with hose-union M/F**  
full bore  
aluminium butterfly handle



32

**CONNESSIONI - CONNECTIONS:**

M/F: ISO228/1

**LIMITE - LIMIT:**

- 10°C (in assenza di liquido) +90°C

- 10°C (without liquid) +90°C

**NOTE - NOTE:**

La pressione max. di utilizzo (PN) si intende a temperatura ambiente di circa 23°C.

The max. working pressure (PN) means at a room temperature of about 23°C.

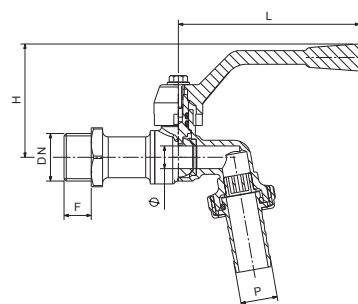
DN	β	F	F2	S2	H1	L1	PN	kg	P/Cart.
1/2"	14,5	11	11	74	38	44	25	0,185	80
3/4"	19	13	14,5	85	45	55	25	0,335	60
1"	24	15	15	96	52	68	25	0,505	40



## McV 10900

**Rubinetto erogazione a sfera**  
con portagomma  
maniglia a leva alluminio

**Ball bibcock**  
with hose-connection  
aluminium lever handle



**CONNESSIONI - CONNECTIONS:**

M: ISO228/1

**LIMITE - LIMIT:**

- 10°C (in assenza di liquido) +90°C  
- 10°C (without liquid) +90°C

**NOTE - NOTE:**

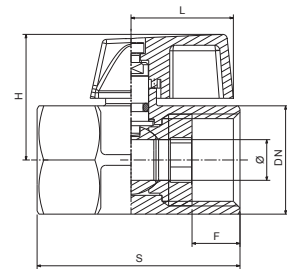
La pressione max. di utilizzo (PN) si intende a temperatura ambiente di circa 23°C.  
*The max. working pressure (PN) means at a room temperature of about 23°C.*

DN	Ø	F	H	L	P	kg	P/Car.
1/2"	10	12	40	86	15	0,191	96
3/4"	12,5	14	41	86	20	0,263	64
1"	15	15	50	100	27	0,412	40

## McV 11000

**Valvola a sfera F/F**  
passaggio ridotto  
maniglia a leva alluminio

**Ball valve F/F**  
reduced bore  
aluminium lever handle



34

**CONNESSIONI - CONNECTIONS:**

F: ISO228/1

**LIMITE - LIMIT:**

- 10°C (in assenza di liquido) +90°C  
- 10°C (without liquid) +90°C

**NOTE - NOTE:**

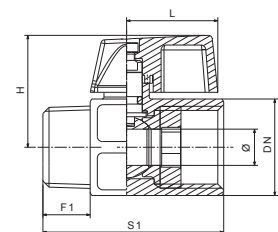
La pressione max. di utilizzo (PN) si intende a temperatura ambiente di circa 23°C.  
The max. working pressure (PN) means at a room temperature of about 23°C.

DN	Ø	F	S	H	L	PN	kg	P/Cart.
1/4"	8	10	38	27	23	10	0,093	300
3/8"	8	10	40	28	23	10	0,085	300
1/2"	10	11	45	30	23	10	0,109	250
3/4"	14	12	50	33	23	10	0,179	150

## McV 11010

**Valvola a sfera M/F**  
passaggio ridotto  
maniglia a leva alluminio

**Ball valve M/F**  
reduced bore  
aluminium lever handle



**CONNESSIONI - CONNECTIONS:**

M/F: ISO228/1

**LIMITE - LIMIT:**

- 10°C (in assenza di liquido) +90°C  
- 10°C (without liquid) +90°C

**NOTE - NOTE:**

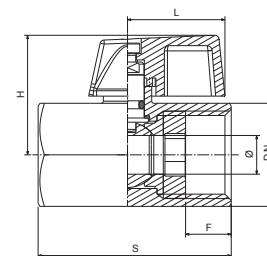
La pressione max. di utilizzo (PN) si intende a temperatura ambiente di circa 23°C.  
The max. working pressure (PN) means at a room temperature of about 23°C.

DN	Ø	F	S	H	L	PN	kg	P/Cart.
1/4"	8	10	40	29	23	10	0,081	300
3/8"	8	10	40	28	23	10	0,077	300
1/2"	10	12	45	30	23	10	0,097	250
3/4"	14	13	53	33	23	10	0,167	150

## McV 11002

**Valvola a sfera F/F**  
da barra esagonale  
passaggio ridotto  
maniglia a leva alluminio

**Ball valve F/F**  
hexagonal barstock  
reduced bore  
aluminium lever handle



**CONNESSIONI - CONNECTIONS:**

F: ISO228/1

**LIMITE - LIMIT:**

- 10°C (in assenza di liquido) +90°C

- 10°C (without liquid) +90°C

**NOTE - NOTE:**

La pressione max. di utilizzo (PN) si intende a temperatura ambiente di circa 23°C.

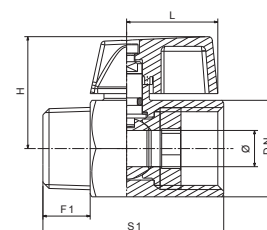
The max. working pressure (PN) means at a room temperature of about 23°C.

DN	Ø	F	S	H	L	PN	kg	P/Cart.
1/4"	8	10	40	27	23	10	0,098	300
3/8"	8	10	40	27	23	10	0,083	300
1/2"	10	12	47	28	23	10	0,109	250
3/4"	14	12	52	33	23	10	0,195	150

## McV 11012

**Valvola a sfera M/F**  
da barra esagonale  
passaggio ridotto  
maniglia a leva alluminio

**Ball valve M/F**  
hexagonal barstock  
reduced bore  
aluminium lever handle



**CONNESSIONI - CONNECTIONS:**

M/F: ISO228/1

**LIMITE - LIMIT:**

- 10°C (in assenza di liquido) +90°C

- 10°C (without liquid) +90°C

**NOTE - NOTE:**

La pressione max. di utilizzo (PN) si intende a temperatura ambiente di circa 23°C.

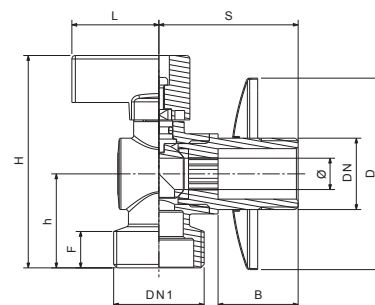
The max. working pressure (PN) means at a room temperature of about 23°C.

DN	Ø	F	S	H	L	PN	kg	P/Cart.
1/4"	8	10	40	28	23	10	0,080	300
3/8"	8	10	40	27	23	10	0,077	300
1/2"	10	12	45	30	23	10	0,109	250
3/4"	14	13	51	32	23	10	0,184	150

## McV 11040

**Rubinetto a sfera attacco lavatrice**  
completo di rosone  
levetta cromata

**Ball cock for washing machine**  
with collar  
chrome-plated lever handle



36

**CONNESSIONI - CONNECTIONS:**

M: ISO228/1

**LIMITE - LIMIT:**

- 10°C (in assenza di liquido) +90°C

- 10°C (without liquid) +90°C

**NOTE - NOTE:**

La pressione max. di utilizzo (PN) si intende a temperatura ambiente di circa 23°C.

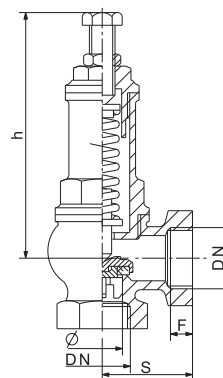
The max. working pressure (PN) means at a room temperature of about 23°C.

DN x DN1	Ø	F	S	h	H	L	B	D	kg	P/Cart.
1/2" x 1/2"	9	12	45	27	62	19	26	54	0,133	100
1/2" x 3/4"	9	10	42	27	64	24	24	54	0,125	100

## McV 900

Valvola limitatrice di pressione a molla  
a squadra F/F  
sede in PTFE

Spring operated angle pressure  
relief valve F/F  
PTFE seat



**CONNESSIONI - CONNECTIONS:**

ISO 228/1

**LIMITE - LIMIT:**

- 10°C (in assenza di liquido) +180°C  
- 10°C (without liquid) +180°C

**NOTE - NOTE:**

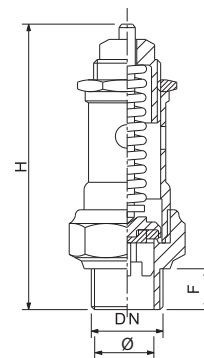
La valvola può essere facilmente regolata alla pressione desiderata da 3/8" a 2" regolabile da 0 a 7 Bar e da 8 a 16 Bar da 2 1/2 a 4" regolabile da 0 a 7 Bar  
La pressione max. di utilizzo (PN) si intende a temperatura ambiente di circa 23°C.  
*The valve can be easily adjusted to the desired pressure from 3/8" to 2" adjustable from 0 to 7 Bar & from 8 to 16 Bar from 2 1/2 to 4" adjustable from 0 to 7 Bar*  
*The max. working pressure (PN) means at a room temperature of about 23°C*

DN	Ø	h	S	F	PN	kg	P/Box
3/8"	10,2	90,5	26	10	16	0,309	1
1/2"	13	92	34	10	16	0,361	1
3/4"	19	117	40	10	16	0,618	1
1"	25,7	123	45	12	16	0,920	1
1 1/4"	31	148	54	13	16	1,442	1
1 1/2"	38	171	60	14	16	1,906	1
2"	48	187	72	15	16	2,987	1
2 1/2"	68	229,5	87	18	16	4,635	1
3"	77,5	250	87,5	19	16	5,480	1

## McV 906

Valvola limitatrice di pressione a molla  
a scarico libero  
sede in PTFE

Spring operated pressure relief valve  
with free discharge  
PTFE seat



**CONNESSIONI - CONNECTIONS:**

ISO 228/1

**LIMITE - LIMIT:**

- 10°C (in assenza di liquido) +180°C  
- 10°C (without liquid) +180°C

**NOTE - NOTE:**

La valvola può essere facilmente regolata alla pressione desiderata da 0 a 7 Bar e da 8 a 16 Bar  
La pressione max. di utilizzo (PN) si intende a temperatura ambiente di circa 23°C.  
*The valve can be easily adjusted to the desired pressure from 0 to 7 Bar & from 8 to 16 Bar*  
*The max. working pressure (PN) means at a room temperature of about 23°C*

DN	Ø	H	F	PN	kg	P/Box
1/2"	13	89	11,5	16	0,170	1
3/4"	19	116,5	16	16	0,392	1
1"	25,7	129	18	16	0,577	1
1 1/4"	31	148,5	23	16	1,133	1
1 1/2"	38	153	24,5	16	1,412	1
2"	48	179	24,5	16	2,091	1

## McV 20000

**Saracinesca F/F**  
passaggio totale  
volantino acciaio

**Gate valve F/F**  
full bore  
steel handwheel

**CONNESSIONI - CONNECTIONS:**

ISO 228/1

**LIMITE - LIMIT:**

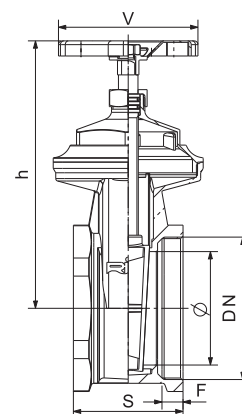
- 10°C (in assenza di liquido) +90°C

- 10°C (without liquid) +90°C

**NOTE - NOTE:**

La pressione max. di utilizzo (PN) si intende a temperatura ambiente di circa 23°C.

The max. working pressure (PN) means at a room temperature of about 23°C.



DN	Ø	F	S	h	V	PN	kg	P/Box	P/Cart.
1/2"	15	9	38	68	45	16	0,183	20	180
3/4"	19	10	44	78	50	16	0,258	20	120
1"	24	11	48	91	55	16	0,379	10	80
1"1/4	32	12	51	108	60	16	0,536	10	60
1"1/2	37	13	58	125	70	16	0,714	5	35
2"	47	13	60	143	70	16	0,975	8	24
2"1/2	60	16	64	155	100	16	1,607	1	18
3"	69	16	74	178	100	16	2,133	1	12
4"	89	18	86	215	120	16	3,654	1	6
5"	117	21	95	317	150	10	7,558	1	1
6"	143	24	105	380	175	10	11,142	1	1

## McV 20020

**Saracinesca F/F**  
passaggio standard  
volantino acciaio

**Gate valve F/F**  
standard bore  
steel handwheel

**CONNESSIONI - CONNECTIONS:**

ISO 228/1

**LIMITE - LIMIT:**

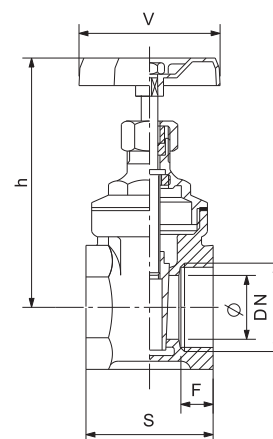
- 10°C (in assenza di liquido) +80°C

- 10°C (without liquid) +80°C

**NOTE - NOTE:**

La pressione max. di utilizzo (PN) si intende a temperatura ambiente di circa 23°C.

The max. working pressure (PN) means at a room temperature of about 23°C.

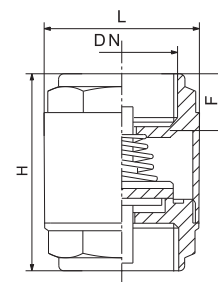


DN	Ø	F	S	h	V	PN	kg	P/Box	P/Cart.
1/4"	13	8	33	67	45	10	0,176	20	200
3/8"	13	8	33	67	45	10	0,158	20	200
1/2"	14	9	35	70	45	10	0,155	20	200
3/4"	15	9	40	70	45	10	0,186	20	180
1"	19	10	43	80	50	10	0,279	20	120
1"1/4	27	10	48	88	55	10	0,387	10	80
1"1/2	33	11	53	105	60	10	0,522	10	60
2"	45	12	58	134	70	10	0,842	5	35

## McV 20100

Valvola di ritegno a molla F/F

Spring check valve F/F



**CONNESSIONI - CONNECTIONS:**

ISO 228/1

**LIMITE - LIMIT:**

- 10°C (in assenza di liquido) +90°C

- 10°C (without liquid) +90°C

**NOTE - NOTE:**

Pressione minima di apertura:

da 3/8" a 2" 1/2 0,02 bar

da 3" a 4" 0,1 bar

La pressione max. di utilizzo (PN) si intende a temperatura ambiente di circa 23°C.

Minimum opening pressure:

from 3/8" to 2" 1/2 0,02 bar

from 3" to 4" 0,1 bar

The max. working pressure (PN) means at a room temperature of about 23°C

DN	F	H	L	PN	kg	P/Cart.
3/8"	10	43	31	16	0,103	240
1/2"	10	45	33	16	0,122	240
3/4"	11	48	41	16	0,185	144
1"	13	56	47	16	0,249	112
1"1/4	13	60	59	10	0,338	48
1"1/2	14	68	68	10	0,515	40
2"	14	75	81	10	0,711	30
2"1/2	20	95	103	8	1,602	18
3"	22	98	111	8	1,885	12
4"	21	109	140	8	3,050	5

## McV 20101

Valvola di ritegno a molla F/F

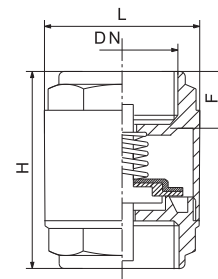
modello pesante

otturatore ottone

Spring check valve F/F

heavy type

brassdisc



**CONNESSIONI - CONNECTIONS:**

ISO 228/1

**LIMITE - LIMIT:**

- 10°C (in assenza di liquido) +90°C

- 10°C (without liquid) +90°C

**NOTE - NOTE:**

Pressione minima di apertura:

da 1/2" a 2" 0,05 bar

da 2" 1/2 a 4" 0,1 bar

La pressione max. di utilizzo (PN) si intende a temperatura ambiente di circa 23°C.

Minimum opening pressure:

from 1/2" to 2" 0,05 bar

from 2" 1/2 to 4" 0,1 bar

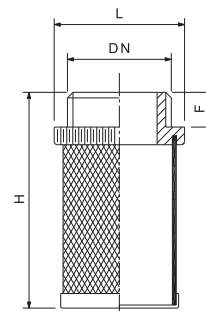
The max. working pressure (PN) means at a room temperature of about 23°C

DN	F	H	L	PN	kg	P/Cart.
1/2"	11	57	34,5	25	0,186	160
3/4"	13	64	41,5	25	0,268	96
1"	14	75	48	25	0,431	80
1"1/4	15	82	60,5	16	0,641	40
1"1/2	17	93	71	16	0,902	32
2"	18	100	87	16	1,293	12
2"1/2	20	120	120	10	2,703	6
3"	22	140	140	10	4,088	4
4"	24	158	155	10	5,562	3

## McV 20105

Filtro maschio in acciaio inox

Stainless steel male filter



**CONNESSIONI - CONNECTIONS:**

ISO 228/1

**LIMITE - LIMIT:**

- 10°C (in assenza di liquido) +90°C

- 10°C (without liquid) +90°C

**NOTE - NOTE:**

Filtrazione 1000 micron

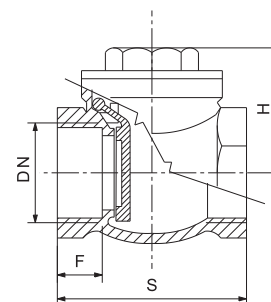
1000 micron filtration

DN	F	H	L	kg	P/Box	P/Cart.
3/8"	7	51	23	0,005	1	400
1/2"	8	50	26	0,008	1	400
3/4"	9	57	32	0,012	1	240
1"	9	57	41	0,015	1	120
1"1/4	11	68	48	0,018	1	96
1"1/2	11	78	55	0,042	1	48
2"	12	95	68	0,062	1	32
2"1/2	13	98	86	0,073	1	16
3"	14	113	99	0,087	1	12
4"	14	131	122	0,168	1	6

## McV 20110

Valvola di ritegno a clapet F/F  
sede metallica

Swing check valve F/F  
metal seat



**CONNESSIONI - CONNECTIONS:**

ISO 228/1

**LIMITE - LIMIT:**

- 10°C (in assenza di liquido) +90°C

- 10°C (without liquid) +90°C

**NOTE - NOTE:**

La pressione max. di utilizzo (PN) si intende a temperatura ambiente di circa 23°C.

The max. working pressure (PN) means at a room temperature of about 23°C.

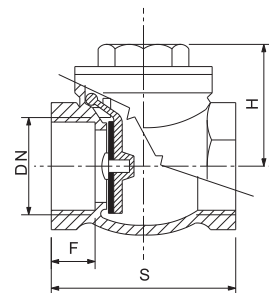
DN	F	S	H	PN	kg	P/Box
1/2"	11	47	31	16	0,144	20
3/4"	12	54	34	16	0,214	10
1"	13	64	40	16	0,339	10
1"1/4	14	76	46	16	0,502	10
1"1/2	15	83	52	16	0,692	6
2"	16	98	59	16	1,021	4
2"1/2	18	116	67	16	1,625	1
3"	20	135	77	16	2,246	1
4"	22	164	91	10	4,009	1



## McV 20111

Valvola di ritegno a clapet F/F  
sede gomma

Swing check valve F/F  
rubber seat



**CONNESSIONI - CONNECTIONS:**

ISO 228/1

**LIMITE - LIMIT:**

- 10°C (in assenza di liquido) +90°C  
- 10°C (without liquid) +90°C

**NOTE - NOTE:**

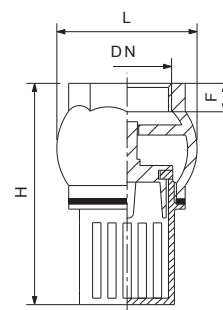
La pressione max. di utilizzo (PN) si intende a temperatura ambiente di circa 23°C.  
The max. working pressure (PN) means at a room temperature of about 23°C.

DN	F	S	H	PN	kg	P/Box
1/2"	11	47	31	16	0,142	20
3/4"	12	54	34	16	0,218	10
1"	13	64	40	16	0,321	10
1"1/4	14	76	46	16	0,504	10
1"1/2	15	83	52	16	0,685	6
2"	16	98	59	16	1,027	4
2"1/2	18	116	67	16	1,645	1
3"	20	135	77	16	2,331	1
4"	22	164	91	10	4,017	1

## McV 20115

Valvola di fondo

Foot valve



**CONNESSIONI - CONNECTIONS:**

ISO 228/1

**LIMITE - LIMIT:**

- 10°C (in assenza di liquido) +90°C  
- 10°C (without liquid) +90°C

**NOTE - NOTE:**

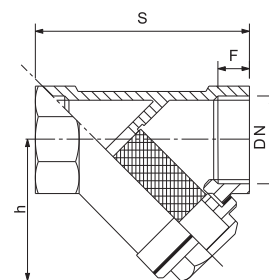
La pressione max. di utilizzo (PN) si intende a temperatura ambiente di circa 23°C.  
The max. working pressure (PN) means at a room temperature of about 23°C.

DN	F	H	L	PN	kg	P/Box
3/4"	9	70	45	10	0,211	12
1"	11	82	51	10	0,270	12
1"1/4	11	95	61	8	0,433	5
1"1/2	11	103	69	8	0,618	6
2"	14	121	80	8	0,912	4
2"1/2	14	137	102	6	1,448	1
3"	15	173	116	6	1,973	1
4"	22	199	144	6	3,321	1

## McV 20150

Raccoglitore d'impurità "Y" F/F

"Y" strainer F/F



**CONNESSIONI - CONNECTIONS:**

ISO 228/1

**LIMITE - LIMIT:**

- 10°C (in assenza di liquido) +90°C

- 10°C (without liquid) +90°C

**NOTE - NOTE:**

1/2" -> 2" Filtrazione 500 micron

2"1/2 -> 4" Filtrazione 600 micron

La pressione max. di utilizzo (PN) si intende

a temperatura ambiente di circa 23°C.

1/2" -> 2" 500 micron filtration

2"1/2 -> 4" 600 micron filtration

The max. working pressure (PN) means at a room

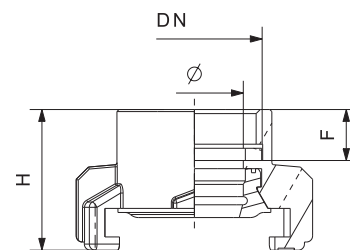
temperature of about 23°C.

DN	F	S	H	PN	kg	P/Cart.
1/2"	12	56	39	16	0,141	160
3/4"	13	66	46	16	0,250	80
1"	15	77	50	16	0,303	80
1"1/4	20	92	65	16	0,629	40
1"1/2	15	107	73	16	0,855	20
2"	18	125	89	16	1,384	16
2"1/2	18,5	134	119	12	2,099	10
3"	21	157	135	12	3,135	8
4"	25	219	170	12	5,429	4

## McV 60000

Raccordo attacco rapido femmina

Female bayonet fastening



**CONNESSIONI - CONNECTIONS:**

F: ISO 228/1

**LIMITE - LIMIT:**

- 10°C (in assenza di liquido) +90°C

- 10°C (without liquid) +90°C

**NOTE - NOTE:**

La pressione max. di utilizzo (PN) si intende a temperatura ambiente di circa 23°C.

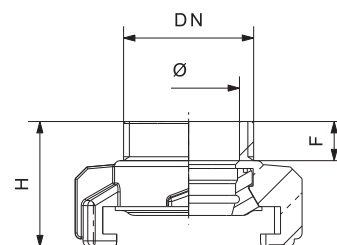
The max. working pressure (PN) means at a room temperature of about 23°C.

DN	Ø	H	F	PN	kg	P/Box	P/Cart.
1/2"	15	32	10	16	0,091	10	200
3/4"	20	34	11	16	0,095	10	200
1"	24	35	12,5	16	0,103	10	200
1"1/4	24	41	13	16	0,145	10	150
1"1/2	24	41	13	16	0,164	10	100

## McV 60001

Raccordo attacco rapido maschio

Male bayonet fastening



**CONNESSIONI - CONNECTIONS:**

M: ISO 228/1

**LIMITE - LIMIT:**

- 10°C (in assenza di liquido) +90°C

- 10°C (without liquid) +90°C

**NOTE - NOTE:**

La pressione max. di utilizzo (PN) si intende a temperatura ambiente di circa 23°C.

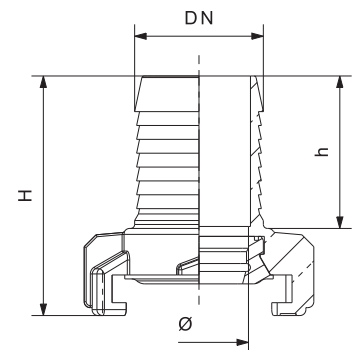
The max. working pressure (PN) means at a room temperature of about 23°C.

DN	Ø	H	F	PN	kg	P/Box	P/Cart.
1/2"	15	32	10	16	0,089	10	200
3/4"	20	32	10	16	0,092	10	200
1"	24	32	10	16	0,096	10	200
1"1/4	24	41	17	16	0,136	10	150
1"1/2	24	41	17	16	0,163	10	100

## McV 60002

Raccordo attacco rapido portagomma

Bayonet fastening with hose-connection



44

**LIMITE - LIMIT:**

- 10°C (in assenza di liquido) +90°C  
- 10°C (without liquid) +90°C

**NOTE - NOTE:**

La pressione max. di utilizzo (PN) si intende a temperatura ambiente di circa 23°C.

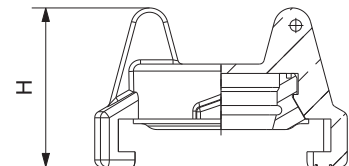
The max. working pressure (PN) means at a room temperature of about 23°C.

DN	Ø	H	h	PN	kg	P/Box	P/Cart.
13	10	46,5	24,5	16	0,094	10	200
15	11	49,5	27,5	16	0,094	10	200
18	13	49,5	27,5	16	0,103	10	200
20	15,5	52	30	16	0,109	10	200
25	20	58	36	16	0,118	10	150
32	26	60,5	38,5	16	0,153	10	100
38	32	77,5	55	16	0,215	10	100

## McV 60003

Tappo attacco rapido

Plug for bayonet fastening



**LIMITE - LIMIT:**

- 20°C (in assenza di liquido) +90°C  
- 20°C (without liquid) +90°C

**NOTE - NOTE:**

La pressione max. di utilizzo (PN) si intende a temperatura ambiente di circa 23°C.

The max. working pressure (PN) means at a room temperature of about 23°C.

DN	H	PN	kg	P/Box	P/Cart.
<b>UNICA ONE SIZE</b>	35	16	0,088	10	200

## McV 90002

Guarnizione per raccordo rapido

Gasket for bayonet fastening



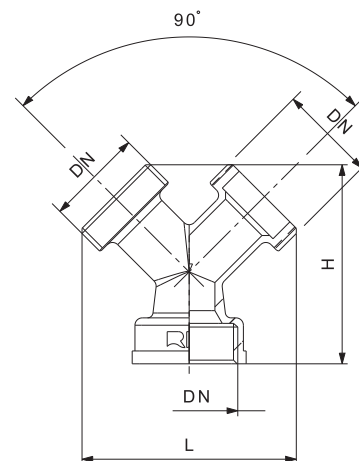
**LIMITE - LIMIT:**  
 - 10°C (in assenza di liquido) +90°C  
 - 10°C (without liquid) +90°C

DN	kg	P/Car.
<b>UNICA ONE SIZE</b>	0,006	100

## McV 60010

Raccordo tre vie F/M/M

Three-way fitting F/M/M



**CONNESSIONI - CONNECTIONS:**

M/F: ISO 228/1

**LIMITE - LIMIT:**

- 10°C (in assenza di liquido) +90°C  
 - 10°C (without liquid) +90°C

**NOTE - NOTE:**

La pressione max. di utilizzo (PN) si intende a temperatura ambiente di circa 23°C.  
 The max. working pressure (PN) means at a room temperature of about 23°C.

DN	H	L	PN	kg	P/Box	P/Car.
3/4"	53	57	16	0,084	10	150



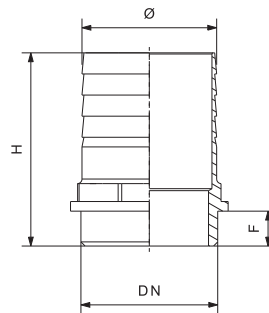
## McV 60100

Raccordo portagomma maschio

Male hose-connection



46



**CONNESSIONI - CONNECTIONS:**

M: ISO 228/1

**LIMITE - LIMIT:**

- 10°C (in assenza di liquido) +100°C  
- 10°C (without liquid) +100°C

**NOTE - NOTE:**

La pressione max. di utilizzo (PN) si intende a temperatura ambiente di circa 23°C.  
The max. working pressure (PN) means at a room temperature of about 23°C.

DNxØ	F	H	PN	kg	P/Box
1/8"x6	6	31	10	0,008	50
1/8"x8	6,5	32	10	0,011	50
1/8"x10	6,5	32	10	0,013	50
1/4"x6	7	33	10	0,012	50
1/4"x8	7	33	10	0,014	50
1/4"x10	7	33	10	0,015	50
1/4"x13	7	33	10	0,019	50
3/8"x10	8	35	10	0,019	40
3/8"x13	8	37	10	0,021	30
3/8"x15	8	40	10	0,025	30
1/2"x10	9	39	10	0,031	50
1/2"x13	9	40	10	0,036	50
1/2"x15	10	41	10	0,036	50
1/2"x16	10	42	10	0,038	50
1/2"x18	10	43	10	0,039	40
1/2"x20	10	44	10	0,040	40
3/4"x13	10	46	10	0,051	30
3/4"x16	11	49	10	0,057	30
3/4"x18	10	48	10	0,049	30
3/4"x20	11	49	10	0,056	30
3/4"x22	11	49	10	0,055	25
3/4"x25	11	52	10	0,084	30
1"x20	10	49	10	0,081	30

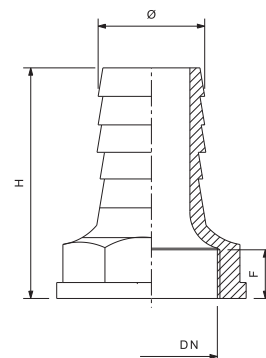
DNxØ	F	H	PN	kg	P/Box
1"x25	12	55	10	0,095	30
1"x27	12	56	10	0,089	30
1"x30	12	56	10	0,108	25
1"x32	11	55	10	0,109	20
1"1/4x30	12	60	10	0,124	20
1"1/4x32	12	60	10	0,125	20
1"1/4x35	12	60	10	0,146	15
1"1/4x39	13	67	10	0,158	12
1"1/4x40	13	67	10	0,178	12
1"1/2x38	13	65	10	0,214	15
1"1/2x40	14	67	10	0,225	12
1"1/2x45	15	74	10	0,231	10
1"1/2x50	13,5	70	10	0,303	10
2"x50	14	72	10	0,287	8
2"x51	14	72	10	0,307	8
2"x60	15	84	10	0,382	5
2"1/2x60	16	95	10	0,482	8
2"1/2x63	16	91	10	0,467	8
2"1/2x70	18	101	10	0,583	5
3"x76	18	98	10	0,774	5
3"x80	19	103	10	0,765	5
4"x100	22	123	10	1,211	2
4"x102	22	123	10	1,381	2



## McV 60101

Raccordo portagomma femmina

Female hose-connection



**CONNESSIONI - CONNECTIONS:**

F: ISO 228/1

**LIMITE - LIMIT:**

- 10°C (in assenza di liquido) +100°C

- 10°C (without liquid) +100°C

**NOTE - NOTE:**

La pressione max. di utilizzo (PN) si intende

a temperatura ambiente di circa 23°C.

The max. working pressure (PN) means at a room temperature of about 23°C.

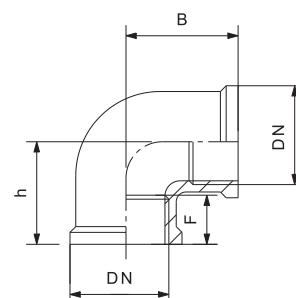
DNxØ	H	F	PN	kg	P/Box
1/8"x8	32	6	10	0,010	50
1/8"x10	32	6	10	0,010	50
1/4"x10	32	6	10	0,015	50
1/4"x13	33,5	7	10	0,016	50
3/8"x10	36	7	10	0,021	40
3/8"x13	38	8	10	0,024	30
3/8"x15	38	8	10	0,025	30
1/2"x10	39	9	10	0,028	50
1/2"x13	39	10	10	0,031	50
1/2"x15	39	10	10	0,032	50

DNxØ	H	F	PN	kg	P/Box
1/2"x18	39	10	10	0,034	40
3/4"x20	44	9	10	0,045	25
3/4"x25	45	9	10	0,052	20
1"x25	52	10	10	0,081	30
1"x30	52	11	10	0,089	25
1"1/4x30	55	11	10	0,101	15
1"1/4x32	55	11	10	0,134	15
1"1/4x35	58	12	10	0,131	15
1"1/2x40	60	11	10	0,192	12
2"x50	77	15	10	0,371	6

## McV 60110

Raccordo Gomito 90° F/F

90° elbow F/F



**CONNESSIONI - CONNECTIONS:**

F: ISO 228/1

**LIMITE - LIMIT:**

- 10°C (in assenza di liquido) +100°C

- 10°C (without liquid) +100°C

**NOTE - NOTE:**

La pressione max. di utilizzo (PN) si intende

a temperatura ambiente di circa 23°C.

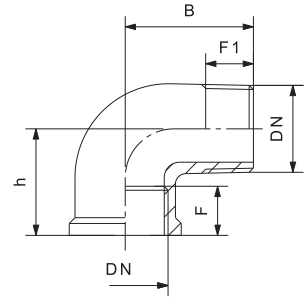
The max. working pressure (PN) means at a room temperature of about 23°C.

DN	h	F	B	PN	kg	P/Box
1/4"	20	10	20	10	0,038	25
3/8"	23,5	12	23,5	10	0,065	25
1/2"	25	13	25	10	0,074	20
3/4"	24,5	12	24,5	10	0,107	12
1"	31,5	16	31,5	10	0,191	6
1"1/4	43	18	43	10	0,284	8
1"1/2	46	18	46	10	0,369	6
2"	55,5	22	55,5	10	0,567	6

## McV 60111

Raccordo Gomito 90° M/F

90° elbow M/F



**CONNESSIONI - CONNECTIONS:**

M/F: ISO 228/1

**LIMITE - LIMIT:**

- 10°C (in assenza di liquido) +100°C

- 10°C (without liquid) +100°C

**NOTE - NOTE:**

La pressione max. di utilizzo (PN) si intende a temperatura ambiente di circa 23°C.

The max. working pressure (PN) means at a room temperature of about 23°C.

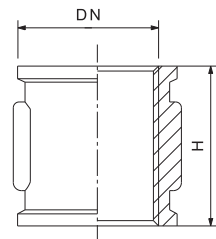
48

DN	h	F	B	F1	PN	kg	P/Box
1/4"	18	9	28	9	10	0,040	25
3/8"	20	11	36	11	10	0,068	25
1/2"	23	12	33	12	10	0,088	20
3/4"	24	12	40	12	10	0,116	12
1"	35	18	50	18	10	0,227	6
1"1/4	42	20	57	20	10	0,307	8
1"1/2	46	22	64	22	10	0,404	6
2"	55	24	68	26	10	0,667	6

## McV 60112

Raccordo manicotto F/F

Sleeve F/F



**CONNESSIONI - CONNECTIONS:**

F: ISO 228/1

**LIMITE - LIMIT:**

- 10°C (in assenza di liquido) +100°C

- 10°C (without liquid) +100°C

**NOTE - NOTE:**

La pressione max. di utilizzo (PN) si intende a temperatura ambiente di circa 23°C.

The max. working pressure (PN) means at a room temperature of about 23°C.

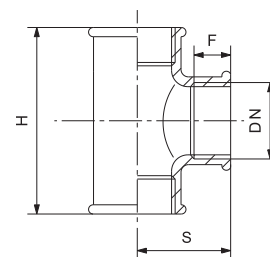
DN	H	PN	kg	P/Box
1/4"	24,5	10	0,026	40
3/8"	29	10	0,037	25
1/2"	32	10	0,059	30
3/4"	34	10	0,100	20
1"	42,5	10	0,135	12
1"1/4	44,5	10	0,186	12
1"1/2	51,5	10	0,257	10
2"	62,5	10	0,401	10



## McV 60113

Raccordo "T" F/F/F

"T" fitting F/F/F



**CONNESSIONI - CONNECTIONS:**

F: ISO 228/1

**LIMITE - LIMIT:**

- 10°C (in assenza di liquido) +100°C

- 10°C (without liquid) +100°C

**NOTE - NOTE:**

La pressione max. di utilizzo (PN) si intende a temperatura ambiente di circa 23°C.

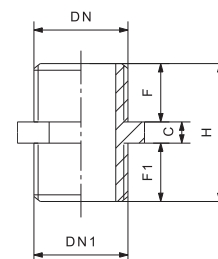
The max. working pressure (PN) means at a room temperature of about 23°C.

DN	H	S	F	PN	kg	P/Box
1/4"	38	19	11	10	0,052	20
3/8"	43	21,5	11	10	0,076	20
1/2"	43,5	21,5	11	10	0,088	15
3/4"	51	25,5	12	10	0,122	12
1"	65	32,5	15	10	0,217	6
1"1/4	86	43	17	10	0,400	6
1"1/2	96	48	19	10	0,544	5
2"	117	57	24	10	0,915	6

## McV 60114

Raccordo M/M

Nipple M/M



DNxDN1	H	F	C	F1	PN	kg	P/Box
1/4"x1/4"	24	9,5	5	9,5	10	0,015	50
1/4"x3/8"	25,5	10	4,5	11	10	0,021	40
3/8"x3/8"	26	10	6	10	10	0,023	40
3/8"x1/2"	27	10	5	12	10	0,036	25
1/2"x1/2"	28	11	6	11	10	0,034	50
1/2"x3/4"	27,5	10,5	5	12	10	0,050	15
3/4"x3/4"	28	12	6	12	10	0,051	30
3/4"x1"	37,5	14,5	7,5	15,5	10	0,096	20
1"x1"	36	15	6	15	10	0,078	15
1"x1"1/4	45	19	6	20	10	0,142	10
1"1/4x1"1/4	45	19	7	19	10	0,153	15
1"1/4x1"1/2	55	23	9	23	10	0,261	10
1"1/2x1"1/2	57	24	9	24	10	0,233	10
1"1/2x2"	55	24	7	24	10	0,305	6
2"x2"	61,5	26	9,5	26	10	0,434	6
2"x2"1/2	58	25	8	25	10	0,501	6
2"1/2x2"1/2	59,5	25,5	8,5	25,5	10	0,494	1
3"x3"	62	26	10	26	10	0,701	1
4"x4"	68	28	12	28	10	1,401	1

**CONNESSIONI - CONNECTIONS:**

M: ISO 228/1

**LIMITE - LIMIT:**

- 10°C (in assenza di liquido) +100°C

- 10°C (without liquid) +100°C

**NOTE - NOTE:**

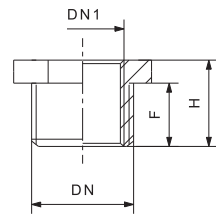
La pressione max. di utilizzo (PN) si intende a temperatura ambiente di circa 23°C.

The max. working pressure (PN) means at a room temperature of about 23°C.

## McV 60115

Raccordo riduzione M/F

Reducer M/F



DNxDN1	H	F	PN	kg	P/Box
1/4"x1/8"	14	9	10	0,010	50
3/8"x1/8"	15	10	10	0,021	50
3/8"x1/4"	15	10	10	0,014	50
1/2"x1/4"	17	10	10	0,027	30
1/2"x3/8"	16	10	10	0,018	50
3/4"x1/4"	19	12	10	0,068	20
3/4"x3/8"	19	12	10	0,054	20
3/4"x1/2"	18	12	10	0,037	50
1"x3/8"	25	18,5	10	0,103	20
1"x1/2"	21	13	10	0,098	20
1"x3/4"	21	13	10	0,071	25
1"1/4x3/4"	28,5	21	10	0,149	10
1"1/4x1"	24	16	10	0,120	15
1"1/2x3/4"	33	24	10	0,326	6
1"1/2x1"	33	24	10	0,282	6
1"1/2x1"1/4"	35	25	10	0,181	8
2"x1"1/4"	35,5	25,5	10	0,265	4
2"x1"1/2"	36	25,5	10	0,209	4
2"1/2x2"	34	25,5	10	0,224	4

**CONNESSIONI - CONNECTIONS:**

M/F: ISO 228/1

**LIMITE - LIMIT:**

- 10°C (in assenza di liquido) +100°C  
- 10°C (without liquid) +100°C

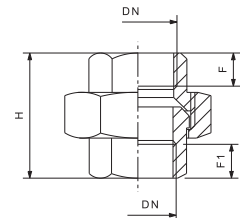
**NOTE - NOTE:**

La pressione max. di utilizzo (PN) si intende a temperatura ambiente di circa 23°C.  
The max. working pressure (PN) means at a room temperature of about 23°C.

## McV 60116

Raccordo bocchettone tre pezzi F/F  
sede metallica

Three-piece hose-union F/F  
metal seat



**CONNESSIONI - CONNECTIONS:**

F: ISO 228/1

**LIMITE - LIMIT:**

- 10°C (in assenza di liquido) +100°C  
- 10°C (without liquid) +100°C

**NOTE - NOTE:**

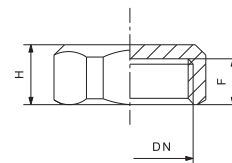
La pressione max. di utilizzo (PN) si intende a temperatura ambiente di circa 23°C.  
The max. working pressure (PN) means at a room temperature of about 23°C.

DN	H	F	F1	PN	kg	P/Box
1/2"	45	12	12	10	0,220	10
3/4"	46	15	15	10	0,295	15
1"	53	16	16	10	0,394	10

## McV 60117

Tappo femmina

Female plug



**CONNESSIONI - CONNECTIONS:**

F: ISO 228/1

**LIMITE - LIMIT:**

- 10°C (in assenza di liquido) +100°C

- 10°C (without liquid) +100°C

**NOTE - NOTE:**

La pressione max. di utilizzo (PN) si intende a temperatura ambiente di circa 23°C.

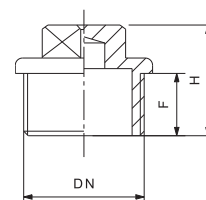
The max. working pressure (PN) means at a room temperature of about 23°C.

DN	H	F	PN	kg	P/Box
1/4"	10	8	10	0,010	50
3/8"	10	8	10	0,011	50
1/2"	11	10	10	0,021	40
3/4"	13	11	10	0,037	20
1"	15,5	12	10	0,071	15
1"1/4	25,5	18	10	0,098	10
1"1/2	26	18	10	0,131	8
2"	30	20	10	0,254	6

## McV 60118

Tappo maschio

Male plug



**CONNESSIONI - CONNECTIONS:**

M: ISO 228/1

**LIMITE - LIMIT:**

- 10°C (in assenza di liquido) +100°C

- 10°C (without liquid) +100°C

**NOTE - NOTE:**

La pressione max. di utilizzo (PN) si intende a temperatura ambiente di circa 23°C.

The max. working pressure (PN) means at a room temperature of about 23°C.

DN	H	F	PN	kg	P/Box
1/4"	14	9	10	0,013	50
3/8"	14	10	10	0,016	50
1/2"	15	10	10	0,025	40
3/4"	18	11	10	0,046	20
1"	18	12	10	0,073	15
1"1/4	37	22	10	0,123	10
1"1/2	39	23	10	0,148	6
2"	45	25	10	0,254	5



Via Angelo Ottone, 4 Frazione Bettole  
13011 BORGOSIESIA (VC) ITALY  
Tel +39 0163 209120 Fax +39 0163 209151  
Skype mcv-vg E-mail mcv-vg@mcv-vg.com  
Web www.mcv-vg.com