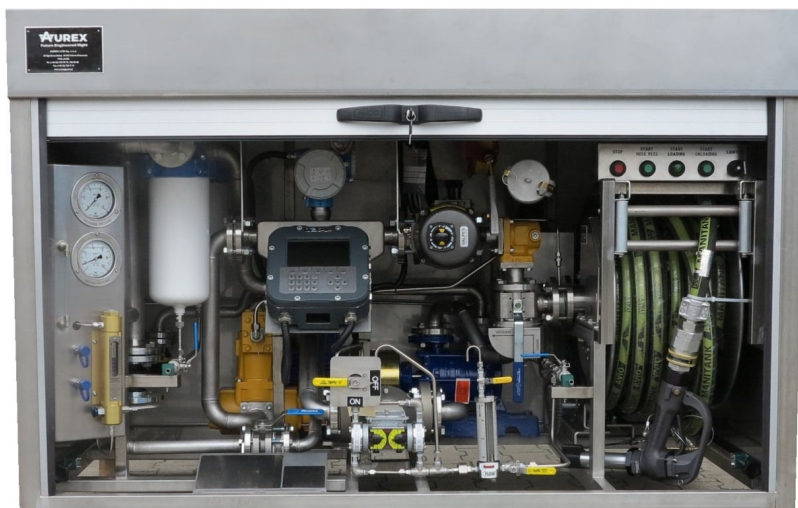


Aircraft Refuelling Unit

XVS1300

DESCRIPTION

The aircraft refuelling unit has been designed as a complete device intended for filling or emptying aircraft tanks with JET-A1 or similar types of aviation fuel. It comprises a system of a pump and a mass flow meter and electronic register housed in a stainless steel enclosure.



The refuelling unit is equipped with a stainless steel reel with pressure hose with the length and diameter designed to individual needs of the customer. The unit is also equipped with a filter-monitor or coalescer/separator for removing water in fuel and an additive injector for preventing water crystallization in aviation fuel. The unit has also a connector for drawing fuel samples before and after filtering.

AIRCRAFT REFUELLING UNIT may be equipped with a printer and a cashless customer billing system and access control with proximity cards and data archiving features.

The unit can be mounted to a frame as an assembly with tanks, depending on the customer's needs.



Aircraft Refuelling Unit

XVS1300

MASS FLOW METER
EQUIPPED WITH
ELECTRONIC REGISTER

PUMP UNIT WITH ELECTRIC
MOTOR

ADDITIVE INJECTOR
PREVENTING WATER
CRYSTALLIZATION IN
AVIATION FUEL

FILTER-MONITOR OR
COALESCER/SEPARATOR
FOR REMOVING WATER IN
FUEL

CONNECTORS FOR
DRAWING SAMPLES
BEFORE AND AFTER
FILTERING

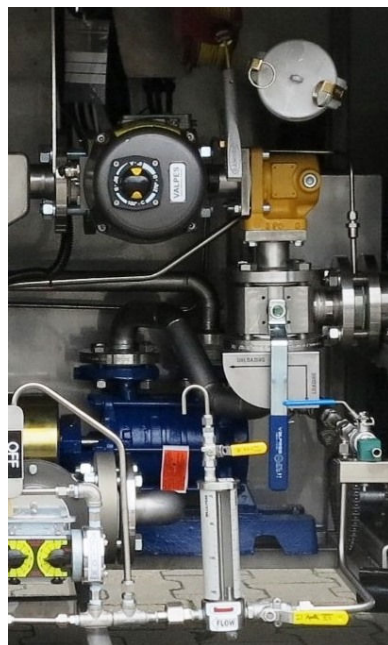
3-WAY VALVE FOR
CONTROL OF FUEL
LOADING AND UNLOADING
FUNCTION

PRESET VALVE WITH
ELECTRIC ACTUATOR

PRESSURE / SUCTION
GAUGES AND
DIFFERENTIAL PRESSURE
GAUGE

ROTARY HOSE REEL MADE
OF STAINLESS STEEL
EQUIPPED WITH ELECTRIC
MOTOR, DN25 L30M HOSE,
FUEL NOZZLE AND
GROUNDING CABLE

STAINLESS STEEL
ENCLOSURE AND PIPING



Aircraft Refuelling Unit

XVS1300

OVERALL DIMENSIONS

TECHNICAL SPECIFICATION

Type: XVS1300

Medium: JET-A1 / AVGAS

Qmin: 25l/min

Qmax: 200l/min

Min dose: 50l

Max working pressure: 7 bar

Min working pressure: 1.5 bar

Max allowable pressure: 10bar

Working temp. -30/+50°C

Medium temp. -10/+40°C

FILTERING:
acc. to EI1581 or EI1583

NOZZLE: G180-ERTB

